

Berrien County Michigan



2011

COMMUNITY PROFILE

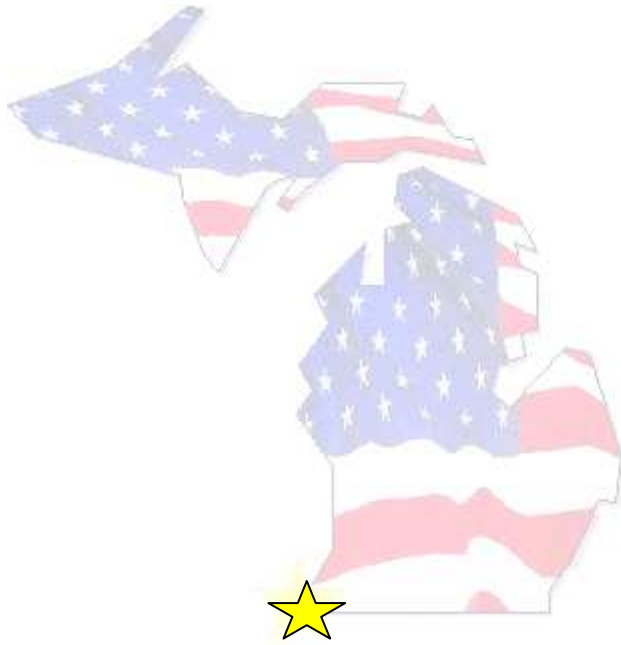


Table of Contents

MAPS OF BERRIEN COUNTY..... 1

HISTORY..... 3

2009 MASTER PLAN 7

DEMOGRAPHICS 10

GOVERNMENT..... 16

PUBLIC SERVICES 19

TAXES 21

TRANSPORTATION..... 22

BUSINESS RESOURCES 24

COMMUNITY RESOURCES 32

RESIDENTIAL OPTIONS 37

EDUCATION..... 39

LEISURE ACTIVITIES..... 42

SPECIAL ACKNOWLEDGEMENTS 57

Mission Statement

It is the mission of Berrien County Government to provide:

- Leadership
- Cooperation with all units of government
- Sound fiscal management and planning

Thereby promoting public safety, health, well being and prosperity in order to improve the quality of life for present and future generations.

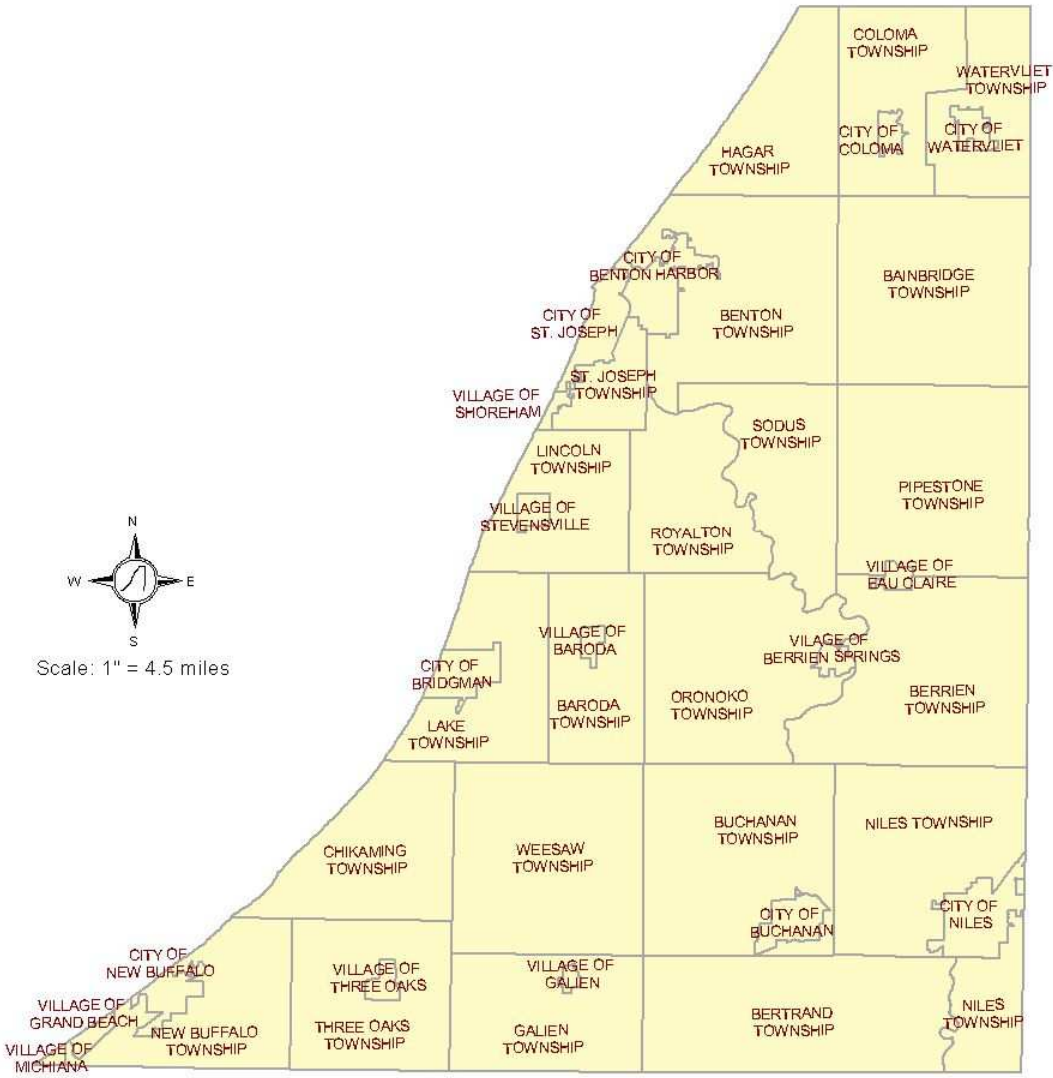


St. Joseph River, north of Buchanan.
 Photo courtesy of "Michigan in Pictures"
 via michpics.wordpress.com.

MAPS OF BERRIEN COUNTY



Local Municipalities



Source: Berrien County GIS, 2002.

MAP 2

Street maps of individual municipalities are available on our website at www.berriencounty.org.

History

Berrien County has received a wide range of accolades. According to American novelist James Fenimore Cooper, Berrien lies in "a region that almost merits the lofty appellation of the Garden of America." A 1718 French official reported, "Tis a spot, the best adopted of any to be seen, for the purpose of living." And John Harner, one of the county's first settlers, wrote in 1834, "it looks pretty good to me; and others are sure to follow." Harner was right. Many did follow, and basing its development on a trinity of fruit, tourism and industry, Berrien County has become one of the state's wealthiest and most populated counties.

Located on Lake Michigan in the southwest corner of the state, and bisected by the St. Joseph River, Berrien County has a long history that begins with the earliest explorers of the Great Lakes. Jacques Marquette was the first white man to visit the region. But it was Rene' Robert Cavalier Sieur de la Salle who had the first real impact. Arriving in 1679, La Salle built Fort Miami at the mouth of the St. Joseph River. Located at the present site of St. Joseph, Fort Miami became the base for several explorations into the Mississippi River Valley. Near the end of the seventeenth century other French explorers built Fort St. Joseph up the river at the present site of Niles. They also established a Jesuit mission at the Niles fort.

Though Fort Miami fell into disuse, Fort St. Joseph was occupied until the French left the area in 1763. The British held the fort until captured by the Spanish in 1781. Though the Spaniards stayed only a few days, their presence provided Niles with the unique distinction of being a "Town of four flags"; the only Michigan community able to make such a claim.

With the exception of a few traders, Berrien remained unsettled until Squire Isaac Thompson, the county's first settler, arrived at Niles in 1823. Organized in 1831 and named after U.S. Attorney General John M. Berrien, the county was populated by settlers who poured into Berrien during the 1830s and endured a multitude of hardships. One problem, the "ague," a form of malaria that came on as attacks of violent chills, high fever, and copious sweating, plagued the newcomers throughout the 1830s. But the settlers resolved their problems with ingenuity. One Buchanan housewife rigged up a harness so her husband could churn the butter and rock the baby each time he was afflicted with the "shakes."

During this period, Michigan's Indians and settlers maintained a cordial relationship. But in one instance, that cordiality temporarily ended. At the James M. Sorter cabin it was common for Indians to spend severe winter nights before the cabin's fire. But one morning when the Sorters awoke they discovered that their nocturnal guests had stolen part of their precious winter food supply. Disappointed that their trust had been violated, a week later, the Sorters were pleased to find a freshly killed deer on their table as repayment for the missing food.

Pioneers continued to immigrate to Berrien and by the outbreak of the Civil War the county's population stood well over 20,000. Answering their country's call-to-arms, Berrien sent over 3,000 men and a few women to war. With the advent of war, Hannah Carlisle of Buchanan accompanied the 2nd Michigan Cavalry to St. Louis, was assigned as a nurse, and served in that capacity for the duration. Women at home received less publicity but also 'served.' After the war, D. W. Gaugler of Berrien Springs was able to sell his farm and enter the furniture business because, while he was off to war, his wife had managed the farm so efficiently that she greatly increased its value.

Following the war, Berrien experienced impressive growth. As early as 1670, a member of La Salle's expedition wrote that the area's warm winters and sandy loam soil provided a good place for growing all kinds of fruit. The French were mainly trappers, not farmers, and did not exploit this opportunity, but it foretold of things to come. As early as 1834, peaches were being harvested and in 1839 the first shipment of peaches was transported and sold in Chicago. From these small beginnings, Berrien County's fruit production has grown to enormous proportions.

¹ The history of Berrien County has been provided by the Southwest Michigan Directory, which is available to view in its entirety at www.swmiDirectory.org.

Today, Berrien is the heart of Michigan's 'fruit belt,' and its fruit production is awesome. The county leads all Michigan counties in the production of peaches, pears and grapes, is second in apples, plums and prunes, and a respectable fourth in tart cherries. Berrien is also the home of Michigan's wine production. Benton Harbor has long been the home of the world's largest outdoor retail fruit market, and every spring a century old "blessing of the blossoms" ceremony begins a weeklong celebration, which is culminated by a parade viewed by crowds in excess of 250,000. This celebration began in 1906.

The second aspect of Berrien's trinity of growth is tourism. As with the fruit industry, Lake Michigan and the proximity to Chicago greatly aided the county's tourist trade. In 1873 Stanley Morton, one of Benton Harbor's earliest residents, ran his small ship, the Lake Breeze, to Chicago and transported tourists to southwestern Michigan. By the summer months of the early twentieth century, numerous ships made the short voyage and brought thousands of Chicagoans to Berrien.

Up and down Berrien's fifty-mile coastline, as well as among its eighty-six inland lakes, were resorts, which catered to the tourists' demands. Places like the Whitcomb, Golfmore, Planks Tavern, Paw Paw Lake, and Tabors Farm, were only a few of the many resorts that were jammed every summer. Tourism today is a flourishing industry.

Industry is the trinity's final element. In 1911 Fred and Louis Upton moved to St. Joseph, obtained a patent for an electric clothes washer, and began the Upton Machine Company. The company almost failed, but after a decade of problems the Uptons enjoyed success. They changed the company's name in 1950 and the Upton Machine Co., now known as the Whirlpool Corporation, has become a leading manufacturer of home appliances and one of the nation's largest corporations.

About the time the Uptons moved to St. Joseph, a small Chicago tool company relocated in Buchanan. The Clark Equipment Company was internationally famous as a leader in the manufacture of a variety of items, particularly heavy-duty machinery. Other men of industry and commerce, who at least began their careers in Berrien, include John and Horace Dodge, and Montgomery Ward. The Dodge Brothers were born in Niles and owned a bicycle manufacturing business before moving to Detroit and establishing Dodge Brothers, Inc., producer of automobiles. Montgomery Ward moved to Niles as a young boy and lived in Berrien until 1865 when he moved to Chicago and founded the mail order department store chain that still bears his name.

As with fruit and tourism, the list of industrial contributions is long and impressive. But Berrien has produced more than industrialists, farmers and hotel managers. The county's greatest literary figure was Ring Lardner. Born in Niles in 1885, Lardner was one of the best-known American authors in the 1920s. He began his career writing sketches of sporting events for a local paper, and later worked for papers in Chicago and New York, where he wrote a popular syndicated column. Beginning in 1914 the Saturday Evening Post began publication of a series of articles that were to become Lardner's best-known works. Later entitled "You Know Me Al", the articles were letters from an ignorant bush league baseball player to his friend, and were among the first literary uses of American common speech. Lardner died in 1933 and his achievements were favorably compared to those of Mark Twain.

Though not a native, Carl Sandburg lived in Harbert for fifteen years, and during that period worked on the biography of Abraham Lincoln that won him the Pulitzer Prize.

And finally, the residents of the sleepy village of Three Oaks, who challenged the nation and won. As a result of a contest to raise money for a memorial to the men of the Maine, sunk in Havana harbor in 1898, Three Oaks raised the largest contribution, per capita, of any U.S. community. As victors they received a cannon captured by Admiral George Dewey at the battle of Manila. President William McKinley dedicated the cannon memorial on October 17, 1899, which still stands in Dewey Cannon Park as a proud reminder of the campaign labeled by locals as "Three Oaks Against the World."

As you might imagine, President McKinley's historic visit caused quite a stir in Berrien County and as a result, obscured another historic event that was of even more importance. Just six days prior to the President's cannon dedication ceremony, Augustus Herring flew the first known man-supporting, heavier-than-air, motorized, controllable, "flying machine" along the shores of Silver Beach in St. Joseph, Michigan. On October 22, 1899, just five days after the President's visit, Herring again flew in his machine but this time had a newspaper reporter present to record the event. If only the news coverage of the day hadn't

been distracted by a presidential visit, Mr. Herring's accomplishments might have received the "First in Flight" designation given the Wright brothers -- whose flight, by the way, was four years after Herring's.

Nineteenth century Berrien poet Ben King wrote,

*How oft on its banks I have sunk in a dream,
Where the willows bent over kissing the stream,
My boat with its nose sort of resting on shore,
While the cat-tails stood guarding a runaway oar;
Oh give me the spot that I once used to know,
By the side of the placid old River St. Joe!*

Today the French explorers and early settlers would hardly recognize the county, but Berrien's development has not destroyed the beauty and tranquility that Ben King so loved.

Berrien County preserves its rich heritage in two excellent museums, Fort St. Joseph² in Niles, and the Old Courthouse Complex in Berrien Springs.

At the corner of Bond and Fort Street in Niles is the huge boulder that marks the site of the old Fort St. Joseph. The seven ton boulder was moved in 1912 from a nearby farm largely financed by nickels from school children. A historical marker recounts the history of the fort from 1691 to 1781. Fort St. Joseph was important in the early fur trade, and settlement of the surrounding area.

Fort St. Joseph was a vibrant center of social, political, economic, and religious activity during the colonial period in southwest Michigan. Nestled along the St. Joseph River in what is now the city of Niles, the fort was founded by the French in 1691 and served as a mission, garrison, and trading post for nearly a century. By the 1730's, Fort St. Joseph had become one of the most important colonial outposts in the western Great Lakes, frequently visited by local Potawatomi and Miami Indian trading partners who lived nearby. It was a vital link in the communications network of New France and played a major commercial role, accounting for a significant volume of furs acquired from Native Americans in exchange for European commodities like glass beads, textiles, iron knives, and brass kettles.

Despite the significance of the fort in the history of early European settlement in the region, Fort St. Joseph remains understudied by professionals and is relatively unknown to the public. For example, there are no detailed maps or drawings that show the size and configuration of the palisade, nor is it known how many structures were built at the site, how they were distributed, or what they looked like. Even the exact location of the fort had eluded archaeologists until recently.

In 2002, excavations by Western Michigan University archaeologists, in partnership with Support the Fort and the City of Niles, identified intact evidence of the Fort St. Joseph community. The evidence consists of structural remains (e.g., a fireplace and a hearth) and other landscape features including a pit filled with carbonized corn cobs and a gunsmith's repair kit. These activity areas are associated with 18th century artifacts, animal bones from colonial meals, and architectural remains such as hand wrought nails that were recovered from throughout the excavations.

The archaeology will continue well into the future as there is much to learn from the material remains of Fort St. Joseph.

The Fort St. Joseph Museum is located in the former carriage house of the beautiful Victorian period Chapin Mansion. The museum tells the story of Niles from its colonial start in 1691 to the present. Featured exhibits portray the history of Fort St. Joseph, built by the French in 1691, the story of the Underground Railroad in southern Michigan, and the importance of the railroad and classification yards in Niles' history. Another unique and truly outstanding exhibit features the museum's Lakota Indian collection including twelve pictographs drawn by Chief Sitting Bull. Together the museum's exhibits tell the story of Niles and the contributions its businesses and citizens have made to the world.

2 The history of Fort St. Joseph was written by Dr. Michael Nassaney and provided by Carol Bainbridge, Museum Director.

One of Berrien County's most impressive historical accomplishments is the preservation of its first courthouse. Built in 1839, the stately little Greek Revival temple was designed by Gilbert Avery, a local master builder. For fifty-six years the courthouse was the center of Berrien County activity; court sessions, governmental activities, weddings, political rallies, lectures, Civil War meetings, musicals, funerals, religious meetings and parties were held there.

In 1894 the county moved its governmental seat to St. Joseph and the courthouse passed into private hands and became a community social center, a militia hall, and finally for nearly half a century, a house of worship for the Berrien Springs Seventh-Day Adventist Church.

In 1967, representatives of local history groups throughout Berrien County organized to save the courthouse and restore it as a county museum. They formed the Berrien County Historical Association (BCHA) as a private nonprofit corporation to care for the buildings on the square and to interpret county history.

Today, the BCHA shares ownership of the square and its buildings with Berrien County. As a county-owned building, the 1839 Courthouse is registered as an officially active Michigan courthouse, although now used mostly for ceremonial functions.

The BCHA completed its first restoration of the courthouse in the 1970s. Unfortunately, in 1989, lightning struck the building and fire severely damaged the northwest corner. The removal of debris after the fire revealed construction details in the courtroom hidden for more than a century. They provided the basis for a much improved restoration of the space. Today the courtroom appears much as it did in 1839.

Berrien County holds some of the most varied archaeological remains of the State of Michigan. The county's rivers, prairies, and lakeshores have drawn people to settle there since the end of the last ice age. The campsites of the county's first inhabitants, the Paleo-Indians, can be found along the high ridges that were once the shores of lakes and streams filled with runoff from the melting glacier.

As the climate changed and the deer and elk replaced the mastodon and caribou, people altered their ways of life. The varying styles of spear and lance points (which we commonly call "arrowheads") are clues to some of these changes, as new weapons and different hunting techniques developed. Burial of the dead became more elaborate. The use of red ochre in the graves as a part of burial ritual, and the placement of items such as gorgets (tablets of slate or shell with holes drilled in them, perhaps used as ornaments), projectile point "blanks" (partially completed stone tools), and stone pipes with the dead, bespeak the care and concern of the bereaved relatives.

In the first few centuries of what we now call the Christian era, the inhabitants of Berrien County were living in small temporary villages, constructing mounds of earth over the graves of the dead, and participating in a trade network that linked most of eastern North America from the Great Lakes to the Gulf of Mexico. We refer to these people today as the Hopewellians, but like the early Paleo-Indians, they were the ancestors of present day Native Americans. Agriculture may have been introduced from Ohio and Illinois about this time. By about AD 1000, the cultivation of corn, beans, and squash had become an important part of the economy for those in Berrien County. The people in the southwestern part of the state at that time were more closely related to those in northern Illinois than to those elsewhere in Michigan. Circular stockades reinforced by earthen embankments enclosed some of their villages. Most hunting was done with the bow and arrow, and well-made pottery was produced. The men and women in these villages were related to the Miami and Potawatomi who greeted the first Europeans to enter Berrien County.

We know the first 10,000 years of Berrien County's human history only from the oral traditions of Native American peoples and the knowledge gleaned from the material remains of the camps and settlements of their ancestors. One of Berrien County's archaeological sites, the Moccasin Bluff site, is among the most significant in the state and has been placed on the National Register of Historic Places. Unfortunately, highways, subdivisions, and sand mining have destroyed many of the hundreds of archaeological sites in the county, and their stories will never be told.

The Master Plan establishes planning goals that, if strived for, will help shape and direct the future of Berrien County. The goals and objectives offered in this Master Plan are the combined result of input from citizens and government officials – elected and appointed throughout Berrien County. The historical information, statistics, and current trends presented in the Master Plan are the result of observation, research, and analysis performed by the Berrien County Planning Commission with assistance of staff. The Berrien County Planning Commission is responsible for overall compilation and content of the County Master Plan.

Based on the observation, research, and analysis the principal themes have evolved into a series of goals and objectives based on the following:

- Landscapes
- Green Infrastructure
- Economic Development
- Agriculture
- Housing
- Transportation
- Infrastructure

Landscapes

Goal

Promote an efficient pattern of development that maintains our sense of place, preserves our natural resources and reduces the effects of sprawl.

Objectives

1. Promote higher density infill development and redevelopment within existing cities, suburban areas, and smaller cities and villages and areas surrounding them.
2. Preserve the unique identity of each of our communities by establishing clear boundaries between them.
3. Maintain our rural sense of place through land use techniques, economic viability agriculture and alternatives that provide rural tax base for local governments.
4. Develop a system of open spaces throughout the county to help delineate communities, maintain our sense of place and preserve our natural lands.

Green Infrastructure

Goal

Protect, preserve and restore the natural resources of Berrien County by creating a connected network of open spaces, recreational areas, and natural habitats.

Objectives

1. Protect and improve the quality of our water resources with a comprehensive program of planning, maintenance, and best management practices.
2. Preserve wetlands, woodlands, floodplains, critical dunes and other natural features through resource assessments, model regulations and leveraging open space and trail programs.
3. Empower local governments and other agencies to preserve and protect the natural resources and open spaces.
4. Promote a multi-jurisdictional approach to green infrastructure planning.

3 This information is from the Berrien County Master Plan 2009. The complete Master Plan can be viewed at www.berriencounty.org.

Economic Development

Goal

Create a common vision with strategies to foster coordination among economic and community development agencies and between these groups and governments.

Objectives

1. Eliminate duplicative community development processes.
2. Focus efforts of community development groups on the economic drivers in the community.
3. Create an economic and community development focus by region.
4. Integrate transportation systems with community development
5. Improve infrastructure information.

Agriculture

Goal

To create an environment where a variety of agricultural operations can continue to thrive in the County, and where agricultural lands can be preserved for generations.

Objectives

1. Enable and empower local governments to preserve agricultural lands.
2. Use County leverage over public services to promote preservation of rural areas and agricultural lands.
3. Create a supportive environment for agricultural support and related businesses.
4. Support agri-tourism.
5. Encourage and support programs that will maintain the viability of agriculture through new and expanding markets for locally grown products.

Housing

Goal

To provide safe, decent and affordable housing for Berrien County residents of all ages, abilities and incomes in Berrien County and within individual communities.

Objectives

1. Maintain existing housing stock and neighborhoods.
2. Ensure housing for seniors.
3. Ensure housing for residents of all abilities.
4. Ensure housing for residents of all incomes.
5. End homelessness in Berrien County.
6. Improve communication and coordination between governmental agencies and practitioners in the housing field.

Transportation

Goal

Use transportation investments to advance economic opportunities and equity in Berrien County.

Objectives

1. Improve the industrial base of the County's economy by targeting investments that improve efficiency and modal links in core urban areas.
2. Provide equal access to the transportation system.
3. Maintain and provide efficiencies in the current system.

Infrastructure

Goal

Coordinate development to infill around existing infrastructure capacity and rehabilitate systems prior to establishing new service.

Objectives

1. Maximize capacity of existing infrastructure.
2. Maximize returns on future infrastructure investments.
3. Provide enhanced solid waste services.

DEMOGRAPHICS

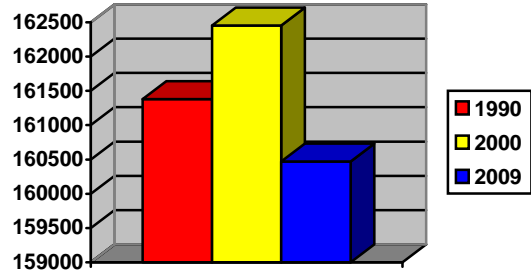
4

Municipality	Population Growth Estimate	Population Estimate 2009	2,000
Bainbridge Township	-0.83%	3,106	3,132
Baroda Township	0.63%	2,898	2,880
Baroda Village	2.21%	877	858
Benton Charter Township	-7.37%	15,195	16,404
Benton Harbor City	-3.18%	10,826	11,182
Berrien Springs Village	3.28%	1,923	1,862
Berrien Township	4.04%	5,280	5,075
Bertrand Township	7.31%	2,554	2,380
Bridgman City	-0.86%	2,407	2,428
Buchanan City	-6.90%	4,358	4,681
Buchanan Township	3.36%	3,628	3,510
Chikaming Township	-0.11%	3,674	3,678
Coloma Charter Township	-2.15%	5,105	5,217
Coloma City	-8.40%	1,461	1,595
Eau Claire Village	-5.03%	623	656
Galien Township	0.25%	1,615	1,611
Galien Village	-6.07%	557	593
Grand Beach Village	9.95%	243	221
Hagar Township	-1.66%	3,898	3,964
Lake Charter Township	-0.32%	3,138	3,148
Lincoln Charter Township	3.00%	14,370	13,952
Michiana Village	-3.00%	194	200
New Buffalo City	10.82%	2,438	2,200
New Buffalo Township	11.14%	2,743	2,468
Niles Charter Township	-0.65%	13,239	13,325
Niles City	-7.64%	11,272	12,204
Oronoko Charter Township	0.03%	9,846	9,843
Pipestone Township	2.02%	2,524	2,474
Royalton Township	19.50%	4,646	3,888
Shoreham Village	-3.84%	827	860
Sodus Township	0.79%	2,156	2,139
St. Joseph Charter Township	-3.95%	9,645	10,042
St. Joseph City	-3.39%	8,491	8,789
Stevensville Village	-4.53%	1,137	1,191
Three Oaks Township	-5.60%	2,784	2,949
Three Oaks Village	-6.89%	1,703	1,829
Watervliet Charter Township	2.65%	3,482	3,392
Watervliet City	-5.43%	1,743	1,843
Weesaw Township	-5.08%	1,960	2,065

4 All demographic information obtained from www.census.gov 2005 - 2007 census estimate. Only the population estimates are available for 2009 and the County population for 2010.

Population

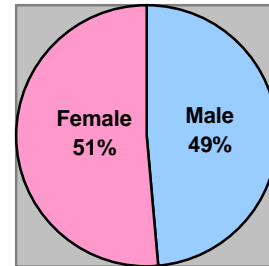
1990 Census	161,378	+0.6 %
2000 Census	162,453	+0.2 %
2010 Census	156,813	-3.5 %



Residents - By Gender

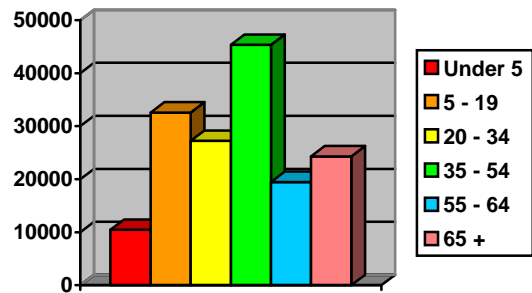
(based on 2009 estimate)

Male population	77,343	48.5 %
Female population	82,055	51.5 %
Total	159,398	



Age Distribution

Under 5	10,448	6.6 %
5 - 19	32,577	20.5 %
20 - 34	27,234	17.1 %
35 - 54	45,353	28.5 %
55 - 64	19,467	12.2 %
65 +	24,319	15.3 %
Median Age	39.9	

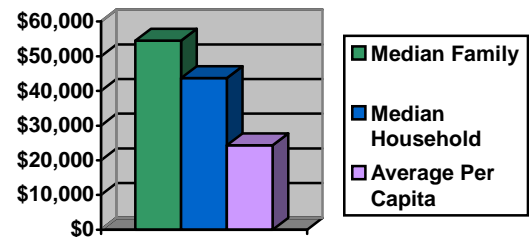


Households

Total Number of Households:	63,306
Average Size of Household:	2.45

Personal Income

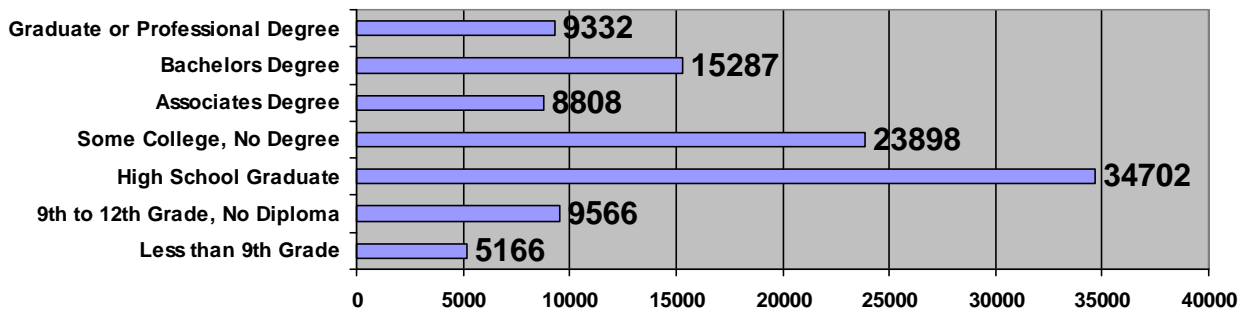
Median Family	\$54,497.00
Median Household	\$43,680.00
Average per Capita	\$24,347.00



Educational Distribution

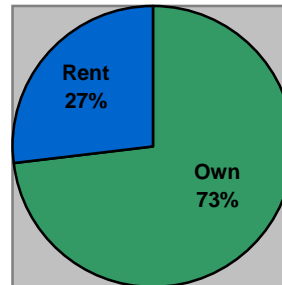
Population 25 Years and Over	106,759	100.0 %
Less than 9 th Grade	5,166	4.8 %
9 th to 12 th Grade, No Diploma	9,566	9.0 %
High School Graduate (includes equivalency)	34,702	32.5 %
Some College, No Degree	23,898	22.4 %
Associates Degree	8,808	8.3 %
Bachelors Degree	15,287	14.3 %
Graduate or Professional Degree	9,332	8.7 %
High School Graduate or Higher		86.2 %
Bachelors Degree or Higher		23.1 %

Educational Distribution



Housing

Number of Dwellings	76,952
Owner Occupied	46,340
Renter Occupied	16,966
Median Rent	\$589.00
Median Home Value	\$138,300



Labor Force

(2010)

Total work force	79,794
Unemployment rate	13.1 %

Principal Economic Base Employers

Top Employers with 150+ Employees

COMPANY	EMPLOYEES
Lakeland Regional Health System	3600
Whirlpool Corporation	3204
Andrew's University	3202
Four Winds Casino	2430
Indiana Michigan Power / Cook Nuclear Plant (Generation)	1200
Berrien County Government	677
Leco Coporation	650
Martin's Super Markets (Niles, St. Joseph & Stevensville)	500
Benton Harbor Area Schools	490
Lake Michigan College	472
Modineer Company	434
Meijer Inc.	332
Lakeshore Public Schools	323
Gast Manufacturing	320
Wal-Mart (Benton Harbor & Niles)	317
St. Joseph Public Schools	295
Lowe's Companies (Benton Harbor & Niles)	295
Watervliet Community Hospital	292
United Federal Credit Union	289
Bosch Braking Systems (Buchanan & St. Joseph)	288
Berrien Regional Education Service Agency	260
Michigan Pizza Hut Inc.	257
Coloma Community Schools	255
Niles Community Schools	250
Berrien Springs Public Schools	250
YMCA Family Center (Niles & St. Joseph)	246
Premier Tool & Die Cast Corporation	245
Pilkington North America	245
Atlantic Automotive Components (JVIS)	220
AACOA	220
IPC Print Services	215
Lane Automotive (Motorstate)	200
Fapco	190
Buchanan Community Schools	183
Intermet (Cast-Matic)	180
Niles Precision Company	175
Hoffman Die Cast Corporation	170
Brandywine Community Schools	166
Hanson International Companies	161
Watervliet Public Schools	157
Riverwood Center	156
Michigan Dept. of Human Services	151

Occupation

Management & Professional Service	23,269	32.2 %
Sales & Office	12,136	16.8 %
Farming, Fishing & Forestry	17,578	24.4 %
Construction, Extraction & Maintenance	673	0.9 %
Production, Transportation & Material Moving	6,708	9.3 %
	11,811	16.4 %

Industry

Agriculture, Forestry, Fishing, Hunting & Mining	1,557	2.2 %
Construction	4,865	6.7 %
Manufacturing	14,004	19.4 %
Wholesale Trade	1,701	2.4 %
Retail Trade	8,017	11.1 %
Transportation & Warehousing, Utilities	4,149	5.7 %
Information	1,173	1.6 %
Finance, Insurance & Real Estate	3,350	4.6 %
Professional, Scientific, Management & Administrative	4,974	6.9 %
Educational, Health & Social Services	16,414	22.7 %
Arts, Entertainment, Recreation, Accommodation & Food Services	6,157	8.5 %
Other Services (except public administration)	3,593	5.0 %
Public Administration	2,221	3.1 %

Climate

	<u>January</u>	<u>July</u>
Average Maximum Temperature	32F / 0C	82F / 28C
Average Minimum Temperature	18F / -8C	61F / 16C
Days over 90F or 32C	11	
Days below 0F or 18C	4	
Days of Growing Season	162	
Average Annual Rainfall	37" / 94cm	
Average Annual Snowfall	70" / 178cm	

Building Permits – 2010

Municipality	Total Permits Issued	Total Dollar Value
Bainbridge Township	40	2,003,645.00
Baroda Township	22	467,500.00
Baroda Village	15	375,900.00
Benton Charter Twp	0	0.00
Benton Harbor City	78	25,033,035.00
Berrien Springs Village	42	428,662.00
Berrien Township	48	1,325,133.00
Bertrand Township	32	3,342,554.05
Bridgman City	58	1,165,493.00
Buchanan City	41	2,977,238.00
Buchanan Township	0	0.00
Chikaming Township	205	11,115,468.00
Coloma Charter Twp	102	2,940,759.00
Coloma City	28	240,102.00
Eau Claire Village	17	287,151.00
Galien Township	13	257,929.00
Galien Village	12	107,027.00
Grand Beach Village	20	1,001,819.00
Hagar Township	65	1,924,874.00
Lake Charter Township	41	1,678,956.00
Lincoln Charter Township	331	18,489,367.00
Michiana Village	0	0.00
New Buffalo City	145	5,307,565.00
New Buffalo Township	81	7,585,330.00
Niles Charter Township	104	8,034,247.00
Niles City	247	2,485,206.00
Oronoko Township	60	20,922,405.00
Pipestone Township	30	577,417.00
Royalton Township	100	17,674,976.00
Shoreham Village	19	158,714.00
Sodus Township	39	1,429,539.00
St. Joseph Charter Twp	349	3,307,190.00
St. Joseph City	338	11,804,968.00
Stevensville Village	30	535,740.12
Three Oaks Township	30	792,961.00
Three Oaks Village	59	620,889.00
Watervliet Charter Twp	51	2,140,985.91
Watervliet City	43	724,000.00
Weesaw Township	20	961,939.00
Total	2,955	\$160,226,684.08

*Information not available from municipality as of the date of printing.

GOVERNMENT

County Government

BERRIEN COUNTY BOARD OF COMMISSIONERS

Bixby, Bryan
 (District 8)
 5743 Pokagon Road
 Berrien Springs MI 49103
 Phone: (269) 471-9290
 bixbyfarms@comcast.net

Pagel, Dave
 (District 9)
 3221 E. Shawnee Road
 Berrien Springs, MI 49103
 Phone: (269) 471-7398
 davepagel@msn.com

Vavra, Andrew R.
 (District 10)
 7120 W. Elm Valley Road
 Three Oaks MI 49128
 Phone: (269) 756-7162
 vavrafamily@qtm.net

Elliott, R. McKinley
 (District 11)
 1 Park Court
 Buchanan MI 49107
 Phone: (269) 695-9312

Panozzo, Debra
 (District 7)
 1614 Barbara Ann Drive
 Stevensville MI 49127
 Phone: (269) 429-2131
 debpanozzo@sbcglobal.net

Wooley, Robert A.
 (District 1)
 P.O. Box 324
 Coloma MI 49038
 Phone: (269) 468-7329
 nbcs@I2K.net

Hinkelman, Jon
 (District 2)
 2201 M-140
 Watervliet, MI 49098
 Phone: (269) 463-3385
 jdinkelman@qtm.net

Perkins, Zach
 (District 13)
 546 Grant Street
 Niles, MI 49120
 Phone: (269) 357-9266
 z@nilescommish.com

Yarbrough, Mamie L.
 (District 4)
 1086 Monroe Street
 Benton Harbor MI 49022
 Phone: (269) 925-2669
 mymymy59@sbcglobal.net

LaMore, John M.
 (District 12)
 2329 Floral Drive
 Niles MI 49120
 Phone: (269) 684-4948
 johnnancylamore@yahoo.com

Seats, Marletta
 (District 3)
 1644 Stanley Drive
 Benton Harbor MI 49022
 Phone: (269) 983-7111 x8095
 marletta@ameritech.net

Leahey, Jeanette
 (District 6)
 2985 E. Bluffwood Terrace
 St. Joseph MI 49085
 Phone: (269) 429-6349
 jeanetteleahey@hotmail.com

Thieneman, Catherine
 (District 5)
 1417 Newberry Hills
 St. Joseph MI 49085
 Phone: (269) 983-7103
 cathythieneman@hotmail.com

Chair.....Dave Pagel
 Vice-Chair Debra Panozzo
 Parliamentarian R. McKinley Elliott
 Chaplain..... Marletta Seats
 Sergeant At Arms..... Bryan Bixby
 Clerk..... M. Louise Stine
 Corporate Counsel Donna Howard

Municipalities

Cities

Benton Harbor City
200 Wall Street
Benton Harbor, MI 49022
Phone: (269) 927-8400

Bridgman City
9765 Maple Street
P.O. Box 366
Bridgman, MI 49106
Phone: (269) 465-5144

Buchanan City
302 North Red Bud Trail
Buchanan, MI 49107
Phone: (269) 695-3844

Coloma City
119 N. Paw Paw St.
P.O. Box 329
Coloma, MI 49038
Phone: (269) 468-6606

New Buffalo City
224 West Buffalo Street
New Buffalo, MI 49117
Phone: (269) 469-1500

Niles City
508 East Main Street
Niles, MI 49120
Phone: (269) 683-4700

St. Joseph City
700 Broad Street
St. Joseph, MI 49085
Phone: (269) 983-5541

Watervliet City
158 W. Pleasant St.
P.O. Box 86
Watervliet, MI 49098
Phone: (269) 463-6769

Townships

Bainbridge Township
7315 Territorial Road
Watervliet, MI 49098
Phone: (269) 468-8040

Baroda Township
9091 First Street
P.O. Box 215
Baroda, MI 49101
Phone: (269) 422-2300

Benton Charter Township
1725 Territorial Road
Benton Harbor, MI 49022
Phone: (269) 925-0616

Berrien Township
8916 M-140
P.O. Box 61
Berrien Center, MI 49102
Phone: (269) 461-6925

Bertrand Township
3835 Buffalo Road
Buchanan, MI 49107
Phone: (269) 695-5001

Buchanan Township
15235 Main Street
Buchanan, MI 49107
Phone: (269) 695-6442

Chikaming Township
P.O. Box 40
13535 Red Arrow Highway
Harbert, MI 49115
Phone: (269) 469-1676

Coloma Charter Township
4919 Paw Paw Lake Road
Coloma, MI 49038
Phone: (269) 468-7212

Galien Township
P.O. Box 246
Galien, MI 49113
Phone: (269) 545-8143

Hagar Township
3900 Riverside Road
P.O. Box 135
Riverside, MI 49084
Phone: (269) 849-0455

Lake Charter Township
3220 Shawnee Road
P.O. Box 818
Bridgman, MI 49106
Phone: (269) 465-6601

Lincoln Charter Township
2055 W. John Beers Road
P.O. Box 279
Stevensville, MI 49127
Phone: (269) 429-1589

New Buffalo Township
17425 Red Arrow Highway
New Buffalo, MI 49117
Phone: (269) 469-1011

Niles Township
320 Bell Road
Niles, MI 49120
Phone: (269) 684-0870

Oronoko Charter Township
4583 E. Snow Road
P.O. Box 214
Berrien Springs, MI 49103
Phone: (269) 471-2824

Pipestone Township
P.O. Box 291
7185 N. Elm Street
Eau Claire, MI 49111
Phone: (269) 944-1063

Royalton Township
980 Miners Road
St. Joseph, MI 49085
Phone: (269) 429-2501

St. Joseph Charter Township
3000 Washington Ave
P.O. Box 147
St. Joseph, MI 49085
Phone: (269) 429-7703

Sodus Township
Sodus Township Hall
Sodus, MI 49126
Phone: (269) 926-6285

Three Oaks Township
8 E. Linden
P.O. Box 55
Three Oaks, MI 49128
Phone: (269) 756-9801

Watervliet Township
4959 M-140
P.O. Box 384
Watervliet, MI 49098
Phone: (269) 463-5113

Weesaw Township
13518 State Street
P.O. Box 38
New Troy, MI 49119
Phone: (269) 426-3002

Villages

Baroda Village
9091 First Street
P.O. Box 54
Baroda, MI 49101
Phone: (269) 422-1779

Berrien Springs Village
112 N. Cass Street
P.O. Box 182
Berrien Springs, MI 49103
Phone: (269) 473-6921

Eau Claire Village
6625 East Main St.
P.O. Box 338
Eau Claire, MI 49111
Phone: (269) 461-6173

Galien Village
121 S. Cleveland
P.O. Box 296
Galien, MI 49113
Phone: (269) 545-3647

Grand Beach Village
48200 Perkins Boulevard
New Buffalo, MI 49117
Phone: (269) 469-3141

Michiana Village
4000 Cherokee Street
New Buffalo, MI 49117
Phone: (269) 469-4600

Shoreham Village
Brown School Road
St. Joseph, MI 49085
Phone: (269) 429-8560

Stevensville Village
5768 St. Joseph Avenue
Stevensville, MI 49127
Phone: (269) 429-1802

Three Oaks Village
P.O. Box 335
Three Oaks, MI 49128
Phone: (269) 756-9221

State and Federal Government Officials

State Governor

Rick Snyder (R)
P.O. Box 30013
Lansing, Michigan 48909
Phone: (517) 373-3400
Fax: (517) 335-6863
Rick.Snyder@michigan.gov

State Senator

John Proos (R), District 21
P. O. Box 30036
Lansing, MI 48909-7536
Phone: (517) 373-6960
Fax: (517) 373-0897
SenJProos@senate.michigan.gov

State Representatives

Sharon Tyler (R), District 78
Michigan House of Representatives
P.O. Box 30014
Lansing, MI 48909-7514
Phone: (517) 373-1796
Fax: (517) 373-5918
sharontyler@house.mi.gov

Al Pscholka (R), District 79
Michigan House of Representatives
P.O. Box 30014
Lansing, MI 48909-7514
Phone: (517) 373-1403
Fax: (517) 373-3652
ALPscholka@house.mi.gov

U.S. Senators

Debbie Stabenow (D)
133 Hart Senate Office Building
Washington, D.C. 20510
Phone: (202) 224-4822
stabenow.senate.gov/email.htm

Carl Levin (D)
269 Russell Senate Office Bldg.
Washington, D.C. 20510
Phone: (202) 224-6221
levin.senate.gov/contact/index.cfm

U. S. Representative

Fred Upton (R)
6th Congressional District
2183 Rayburn H.O.B.
Washington, D.C. 20515
Phone: (202) 225-3761
Fax: (202) 225-4986
tellupton@mail.house.gov

District Office:

800 Centre
Suite 106
800 Ship Street
St. Joseph, MI 49085
Phone: (269) 982-1986

PUBLIC SERVICES

Departments of Berrien County

Berrien County Administration
701 Main Street
St. Joseph, MI 49085
Phone: (269) 983-7111

Berrien County Courthouse
811 Port Street
St. Joseph, MI 49085
Phone: (269) 983-7111

South County Building
1205 North Front Street
Niles, MI 49120
Phone: (269) 684-5274

- Administration
- Animal Control
- Building Authority
- Building & Grounds
- Community Development
- Concealed Weapons Board
- Corporate Counsel
- County Clerk
- County Election Commission
- Courts
- Drain Commission
- Election Canvassers
- Emergency Management
- Equalization
- Financial Services
- Friend of the Court
- GIS Mapping & Land Desc.
- Health Department
- Information Systems
- Legal Services
- Motor Pool
- MSU Extension
- Parks & Recreation
- Personnel
- Platting Board & Committee
- Printing/Microfilming
- Prosecuting Attorney
- Public Works
- Purchasing
- Register of Deeds
- Road Commission
- Sheriff's Department
- Treasurer
- Trial Court
- Tri-Court Services
- Veterans

Post Offices

For further information on services provided, please call toll free (800) 275-8777 or visit the United States Postal Service website at www.usps.com.

Baroda
1368 South Street
Baroda, MI 49101

Coloma
201 North West Street
Coloma, MI 49038

New Troy
13377 California Road
New Troy, MI 49119

Stevensville
5888 Cleveland Avenue
Stevensville, MI 49127

Benton Harbor
525 Riverview Drive
Benton Harbor, MI 49022

Eau Claire
6537 East Main Street
Eau Claire, MI 49111

Niles
741 Broadway Street
Niles, MI 49120

Three Oaks
201 North Elm Street
Three Oaks, MI 49128

Berrien Center
7493 Deans Hill Road
Berrien Center, MI 49102

Galien
114 Cleveland Avenue
Galien, MI 49113

Riverside
3889 Riverside Road
Riverside, MI 49084

Union Pier
16201 Red Arrow Highway
Union Pier, MI 49129

Berrien Springs
115 North Main Street
Berrien Springs, MI 49103

Harbert
13785 Red Arrow Highway
Harbert, MI 49115

St. Joseph
205 Main Street
St. Joseph, MI 49085

Watervliet
342 West Pleasant Street
Watervliet, MI 49098

Bridgman
9655 Maplewood Street
Bridgman, MI 49106

Lakeside
14943 Lakeside Road
Lakeside, MI 49116

Sawyer
5835 Sawyer Road
Sawyer, MI 49125

Buchanan
112 West Front Street
Buchanan, MI 49107

New Buffalo
325 West Buffalo Street
New Buffalo, MI 49117

Sodus
3568 Naomi Road
Sodus, MI 49126

Sheriff's Department

919 Port Street
St. Joseph MI 49085
Emergency Calls: (269) 983-3911
Administrative Calls: (269) 983-7141

The Sheriff is the chief executive charged with law enforcement and the preservation of peace within the County. He has custody of the jail and of the prisoners lodged within. He must promote domestic tranquility in the County, is the court officer of the Circuit Court and must serve all writs, processes and warrants and make proper return thereof.

L. Paul Bailey Sheriff
Chuck Heit Undersheriff
Mike Bradley Chief Deputy
David Cochran Captain
Paul Toliver Captain
Donald Divis Captain

Toll Free Helplines

Alzheimer's Disease Education and Referral Center (800) 438-4380
American Dietetic Association (800) 366-1655
American Institute for Cancer Research (800) 843-8114
American Kidney Fund (800) 638-8299
American SIDS Institute (800) 232-7437
Child Find Hotline (800) 426-5678
Child Help USA Hotline (800) 422-4453
Cystic Fibrosis Foundation (800) 344-4823
Down Syndrome Hotline (800) 221-4602
Drug Abuse Referral Hotline (800) 662-4357
Epilepsy Foundation of America (800) 332-1000
Helen Keller National Center (800) 255-0411
Medicare / Medicaid Assistance Program (800) 803-7174
Multiple Sclerosis Foundation (800) 441-7055
National Adoption Center (800) 862-3678
National AIDS Hotline (800) 342-2437
National Center for Missing & Exploited Children (800) 843-5678
National Council on Child Abuse & Family Violence (800) 222-2000
National Grief Recovery (800) 445-4808
National Health Information Center (800) 336-4797
National Literacy Hotline (800) 228-8813
National Lyme Disease Foundation (800) 886-5963
National Mental Health Association (800) 433-5959
National Parkinson's Foundation (800) 327-4545
National Reye's Syndrome (800) 233-7393
Organ Donor Hotline (800) 243-6667
Orton Dyslexia Society (800) 222-3123
Prostate Information (800) 543-9632
Runaway Hotline (800) 231-6946
Senior Info Line (800) 654-2810
SIDS Alliance (800) 638-7437
Youth Crisis Hotline (800) 262-2463

MUNICIPALITY	General County (mills)	Law Enf. Pub/Safety (mills)	Sp. Voted 911 (mills)	Sr. Ctzn. (mills)	LMC College (mills)	MILLS	SPECIAL VOTED MILLS	TOTAL MILLS
Bainbridge Township	4.7723	0.3500	0.2500	0.3000	1.7854	0.7491	0.2500	8.4568
Baroda Township	4.7723	0.3500	0.2500	0.3000	1.7854	0.7829	3.4720	11.7126
Baroda Village	4.7723	0.3500	0.2500	0.3000	1.7854	9.9000		17.3577
Benton Charter Township	4.7723	0.3500	0.2500	0.3000	1.7854	0.9796	12.4400	20.8773
Benton Harbor City	4.7723	0.3500	0.2500	0.3000	1.7854	11.1287	12.9621	31.5485
Berrien Springs Village	4.7723	0.3500	0.2500	0.3000	1.7854	10.3930	3.4539	21.3046
Berrien Township	4.7723	0.3500	0.2500	0.3000	1.7854	0.7171		8.1748
Bertrand Township	4.7723	0.3500	0.2500	0.3000	1.7854	0.8888	2.2460	10.5925
Bridgman City	4.7723	0.3500	0.2500	0.3000	1.7854	14.7001	1.7347	23.8925
Buchanan City	4.7723	0.3500	0.2500	0.3000	1.7854	17.1000	1.0000	25.5577
Buchanan Township	4.7723	0.3500	0.2500	0.3000	1.7854	0.7547	1.2000	9.4124
Chikaming Township	4.7723	0.3500	0.2500	0.3000	1.7854	0.3750	1.4000	9.2327
Coloma City	4.7723	0.3500	0.2500	0.3000	1.7854	16.5349	0.2500	24.2426
Coloma Township	4.7723	0.3500	0.2500	0.3000	1.7854	0.7027	6.1953	14.3557
Eau Claire Village	4.7723	0.3500	0.2500	0.3000	1.7854	11.5433	3.0000	22.0010
Galien Township	4.7723	0.3500	0.2500	0.3000	1.7854	0.7149	3.6452	11.8178
Galien Village	4.7723	0.3500	0.2500	0.3000	1.7854	8.2248		15.6825
Grand Beach Village	4.7723	0.3500	0.2500	0.3000	1.7854	6.2719		13.7296
Hagar Township	4.7723	0.3500	0.2500	0.3000	1.7854	0.6396	1.4754	9.5727
Lake Charter Township	4.7723	0.3500	0.2500	0.3000	1.7854	3.0000		10.4577
Lincoln Charter Township	4.7723	0.3500	0.2500	0.3000	1.7854	0.7862	4.1279	12.3718
Michiana Village	4.7723	0.3500	0.2500	0.3000	1.7854	7.5631	0.9963	16.0171
New Buffalo City	4.7723	0.3500	0.2500	0.3000	1.7854	10.4823	0.4634	18.4034
New Buffalo Township	4.7723	0.3500	0.2500	0.3000	1.7854	0.4125	0.6430	8.5132
Niles Charter Township	4.7723	0.3500	0.2500	0.3000	1.7854	0.8732	4.1500	12.4809
Niles City	4.7723	0.3500	0.2500	0.3000	1.7854	14.1334	0.5000	22.0911
Oronoko Charter Township	4.7723	0.3500	0.2500	0.3000	1.7854	0.8195	4.0000	12.2772
Pipestone Township	4.7723	0.3500	0.2500	0.3000	1.7854	0.8832		8.3409
Royalton Township	4.7723	0.3500	0.2500	0.3000	1.7854	0.7504	2.0965	10.3046
Shoreham Village	4.7723	0.3500	0.2500	0.3000	1.7854	1.0000		8.4577
Sodus Township	4.7723	0.3500	0.2500	0.3000	1.7854	0.8898	3.2000	11.5475
St. Joseph Charter Township	4.7723	0.3500	0.2500	0.3000	1.7854	0.7591	5.1999	13.4167
St. Joseph City	4.7723	0.3500	0.2500	0.3000	1.7854	12.5000	2.9244	22.8821
Stevensville Village	4.7723	0.3500	0.2500	0.3000	1.7854	8.7345		16.1922
Three Oaks Township	4.7723	0.3500	0.2500	0.3000	1.7854	0.7622	1.8796	10.0995
Three Oaks Village	4.7723	0.3500	0.2500	0.3000	1.7854	9.2450	3.6978	20.4005
Watervliet Charter Township	4.7723	0.3500	0.2500	0.3000	1.7854	0.5952	7.5609	15.6138
Watervliet City	4.7723	0.3500	0.2500	0.3000	1.7854	16.9389	5.7500	30.1466
Weesaw Township	4.7723	0.3500	0.2500	0.3000	1.7854	0.8395	1.7500	10.0472

5 A complete listing of the Berrien County Tax Spread and the Berrien County School Tax Spread for 2010 is available on our website at www.berriencounty.org.

TRANSPORTATION

We're closer than you think! Miles are calculated from the County Seat (St. Joseph, Michigan).

Kalamazoo, MI	53 Miles	Indianapolis, IN	172 Miles
South Bend, IN	37 Miles	Detroit, MI.....	188 Miles
Grand Rapids, MI	82 Miles	Toledo, OH.....	194 Miles
Chicago, IL	97 Miles	Cleveland, OH.....	293 Miles
Lansing, MI.....	123 Miles		

Airports – Commercial

Michiana Regional Transportation Center	South Bend, Indiana.....	(574) 282-4590
Kalamazoo International	Kalamazoo, Michigan	(269) 388-3666

Airports – General Aviation

Andrews Airpark.....	Berrien Springs, Michigan.....	(269) 471-1455
*Southwest Michigan Regional.....	Benton Harbor, Michigan	(269) 927-3194
Tyler Memorial	Niles, Michigan.....	(269) 684-7030
Watervliet Airpark.....	Watervliet, Michigan	(269) 463-6769

*Southwest Michigan Regional Airport in Benton Harbor is designed to accommodate all types of air service, from sophisticated business jets to recreational aircraft. The airport offers three paved, lighted runways, aircraft hangars, aviation fuel and A & P service through AVSAT, Inc. (the onsite fixed base operator), car rental through Avis and Hertz, emergency response personnel and equipment, computerized weather service, and an Instrument Landing System. Further information may be obtained by calling Southwest Michigan Regional Airport directly at (269) 927-3194.

Bus Lines

Benton Harbor Bus Center
 Greyhound Bus Lines and Indian Trails Motorcoach
 Depot: Benton Charter Township
 Phone: (269) 925-1121

Berrien Bus
 Serves Berrien County
 Phone: (269) 471-1100

Berrien County Public Transport
 Serves Berrien County
 Phone: (800) 654-1827

Dial-A-Ride (Benton Harbor)
 Serves Benton Harbor / St. Joseph Area
 Phone: (269) 927-4461

Dial-A-Ride (Niles)
 Serves Buchanan / Niles Area
 Phone: (269) 684-5150

Tri-State Coach Lines
 Provides transportation to Michiana and Chicago
 Airports
 Phone: (800) 248-8747

Helicopter Service

Bolton Air via Tyler Memorial	Niles, Michigan.....	(269) 684-1793
-------------------------------------	----------------------	----------------

Highways

I-94, I-196, M-51, M-63, M-140, U.S. 12, U.S. 31, Red Arrow Highway

Ports

Benton Harbor / St. Joseph River Harbor Authority
701 Main Street
St. Joseph, MI 49085
Contact: John Gruchot
Phone: (269) 983-7111 Ext. 8350

Dock 63
220 N. Wayne Street
St. Joseph, MI 49085
Contact: Pete Berghoff
Phone: (269) 983-5556

Consumers International Terminal Company
P.O. Box 624
Benton Harbor, MI 49023
Contact: Jack Kinney
Phone: (269) 926-1111

LaFarge Cement Corp.
200 N. Upton Drive
St. Joseph, MI 49085
Contact: Rick Moore
Phone: (269) 983-6333

The St. Joseph / Benton Harbor commercial port is located on the St. Joseph River. In addition to accommodating deep draft freighters, approval was granted in the Spring of 1995 for river barge shipping via the Mississippi River.

Rail Lines

CSX Transportation
Steven Davis, Regional Development Manager
545 Metro Place South, Suite 100
Dublin, OH 43017
Phone: (614) 793-3065
Fax: (614) 766-3605

Amtrak offers passenger service in St. Joseph, New Buffalo and Niles. Please call (800) 872-7245 for information and / or reservations. The Northern Indiana Commuter Transit, commonly referred to as the "South Shore", also provides daily commuter service to Chicago from Michiana Regional Airport located in South Bend, Indiana. Please call (800) 356-2079 for further information.

Taxi Service

A Cab & Carrier Service
Buchanan, MI 49107
Phone: (269) 697-0427

Advance Cab
873 E. Empire Avenue
Benton Harbor, MI 49022
Phone: (269) 925-2115

Continental Cab Co.
2642 Burkett
Sodus, MI 49126
Phone: (269) 925-6400

Yellow Cab
422 S. Mayflower Road
South Bend, IN 46619
Phone: (269) 684-9400

BUSINESS RESOURCES

Business Incentives

A brief summary of county, local, state, and federal programs is provided here.

County Programs

Brownfield Redevelopment

A brownfield is an environmentally contaminated property. Through the Brownfield Redevelopment Financing Act, a developer of contaminated property can be reimbursed for eligible environmental activities that they paid for as well as a 10% single business tax credit for the investment in building, demolition, renovation or improvements, machinery and equipment. In addition, cleanup costs are now 50% lower for industrial and commercial properties. Berrien County has a Brownfield Redevelopment Authority that is able to implement brownfield plans for properties on behalf of a municipality. Properties that are blighted or obsolete may also qualify for capture of these same taxes under the Core Communities Initiative. Contact Berrien County Community Development at (269) 983-7111, ext. 8617 for more information.

Obsolete Property Rehabilitation

Developers of commercial property and commercial housing property now have the ability to be exempt from ad valorem property taxes under the Obsolete Property Rehabilitation Act. This act allows commercial properties to receive property rehabilitation exemption certificates if they reside within qualified local governmental units. Commercial rehabilitation projects must show an increase in the likelihood of commercial activity, creating employment or reducing its loss, or increasing residence within the building's community. To receive an exemption certificate, a developer must first apply to a qualified local governmental unit (QLGU). The QLGU's in Berrien County are Benton Harbor and Benton Charter Township.

Industrial Facilities Tax Abatement

Industrial facilities (including high-technology facilities), machinery and equipment are eligible to receive an exemption of real and personal property taxes for up to 12 years. This tax savings is realized when the company pays its Industrial Facilities Tax (IFT). Berrien County Economic Development administers tax abatements to industrial facilities in the county at no charge. For obsolete machinery or plants, a 100% property tax exemption is granted on the value of the improvement. For new plant and/or machinery and equipment, the tax is half the local property tax millage rate, plus the 6-mill statewide education tax, reducing the property tax by almost 50%. For a speculative building, the local government must declare a manufacturing facility as such. Then, costs are eligible for a property tax reduction by almost 50%. Since tax abatements are time-sensitive and procedure-oriented, it is best to contact Berrien County Community Development at (269) 983-7111, ext. 8617 prior to any commencement.

Renaissance Zones

Berrien County has Renaissance Zones in Benton Harbor, St. Joseph, Benton Charter Township, Buchanan and Watervliet Township. Renaissance zones are areas that are virtually tax-free for any business or resident located in one of the zones. Businesses and/or residents of renaissance zones do not pay the following taxes:

- Single Business Tax
- State Personal Income Tax
- 6-mill State Education Tax
- Local Personal Property Tax
- Local Real Property Tax
- Local Income Tax
- Utility Users Tax

Contact Berrien County Community Development at (269) 983-7111, ext. 8617 for more information on Renaissance Zones.

Revolving Loan Fund

Berrien County Community Development has a revolving loan fund that is used to promote the growth of small, entrepreneurial companies. Typically, these loans are coordinated with a primary conventional lender and the Small Business Administration. The size of these loans and the interest rate are determined on a case-by-case basis. The interest rate is no less than prime rate and usually no higher than 2 points over prime. Companies that complete the application and are eligible to receive a loan can anticipate a turnaround time on the receipt of the loan monies of 30 days or more. Contact Berrien County Community Development at (269) 983-7111 ext. 8617 for more information.

Local Programs

North Berrien Community Development

North Berrien Community Development is a non-profit community-based corporation that represents the townships and cities of Coloma and Watervliet in their efforts to influence the development and changes within the Paw-Paw Lake area. North Berrien Community Development also provides services as requested to Bainbridge and Hagar Townships. North Berrien Community Development is the resource that the community looks to for the coordination of programs that are grant or loan eligible. It also serves as an information center for the area on projects and players that are influential in the changes within the community. Projects that are sponsored by the organization are varied, but do emphasize the job creation and job maintenance aspects of the community. For more information on the programs available, contact Chana Kniebes at (269) 468-4430.

Cornerstone Alliance

Cornerstone Alliance is a non-profit, investor driven community and economic development organization focusing on tax and job base creation, with an emphasis on socially and economically distressed areas, facilitating change through partnerships within the communities comprised of Benton Harbor, St. Joseph, Benton Charter Township, St. Joseph Charter Township, Lincoln Charter Township, and Royalton Township. To support its mission, Cornerstone Alliance offers economic development tools, public relations services, business and education partnerships, employee recruitment and assimilation, and small business services. For more information, call Cornerstone Alliance at (269) 925-6100.

Southwestern Michigan Economic Growth Alliance

Southwestern Michigan Economic Growth Alliance (SMEGA), Inc. is a nonprofit economic development corporation promoting industrial retention and the creation of jobs in Bertrand Township, Buchanan City and Township, Galien Township and Village, Niles City and Township, and Three Oaks Township and Village, with its primary emphasis on the Greater Niles area. SMEGA is committed to being the primary economic development organization to ensure the retention and creation of jobs and tax base within the Greater Niles and Buchanan area. For information on incentives offered by SMEGA, contact Shelley Klug at (269) 683-1833.

Other Incentives

A few local municipalities, Village of Baroda, City of Buchanan, City of Niles and Village of Stevensville, also offer revolving loan funds. Depending upon availability of funds, Berrien County and a municipality can both provide revolving loans for a specific project to further enhance the equity position of a company with a financial institution. Please check with each municipality for availability.

Michigan Economic Development Corporation (MEDC) Programs

Community Development Block Grants

Community Development Block Grants (CDBG) are state administered federal grants that typically involve public infrastructure projects for economic and community development and housing projects. One of the main goals of the program is to provide businesses with an incentive for location or expansion that will result in permanent job creation or expansion. At least 51% of the jobs must be held by persons with low to moderate income. To be considered for CDBG funding, a local government must prepare a submittal to MEDC. Contact MEDC at (888) 522-0103 or Berrien County Community Development at (269) 983-7111, ext. 8617 for more information.

Industrial Development Revenue Bonds

IDRBs are an attractive source of financial assistance that provides healthy, profitable firms locating or expanding in Michigan with capital cost savings stemming from the difference between taxable and tax-exempt interest rates. Public facilities which generate a revenue stream (parking structures, for instance) have traditionally been financed by municipalities through the mechanism of a tax-exempt "revenue bond". IDRBs apply this same tax-exempt finance mechanism to the "public purpose" of economic development. The governmental unit borrows money from private capital markets, secured only by the project's revenues (rather than the government's full faith and credit). Interest income earned on bonds issued by a governmental entity to finance a project for a private company which has demonstrated a good public purpose is exempt from federal and state income taxes, thereby reducing the cost of capital to an average 75%-85% of prime. Contact MEDC at (888) 522-0103 or Berrien County Community Development at (269) 983-7111, ext. 8617 for more information.

MEGA/Hi-Tech MEGA

Michigan Economic Growth Authority (MEGA) is the state's response to interstate competition for company expansions and relocations and the promotion of high-tech business in traditional and emerging industries (Hi-Tech MEGA) by providing a credit against the Single Business Tax. Companies engaged in manufacturing, R&D, wholesale trade or office operations are eligible to apply for the MEGA credit, while businesses in advanced computing, biotechnology, electronic device technology, engineering and laboratory testing related to product research and development, medical device technology, advanced vehicle technology, or technology that assists in the assessment or prevention of threats or damage to human health or the environment are eligible to apply for the High-Tech MEGA. Since MEGA's application process has steps that must be completed in a specific order, companies must contact MEDC at (888) 522-0103 before announcement or commencement of any project.

Venture Capital

Michigan's venture funding initiatives are designed to improve access to private venture capital for Michigan growth-oriented firms. The Michigan Economic Development Corporation has developed a comprehensive directory of Michigan resources involved with venture funding, including more detailed profiles of venture funds and their interests. For a listing of venture capital firms, visit MEDC at <http://medc.michigan.org/GreatLocation/Firm/>

Economic Development Job Training

The Economic Development Job Training (EDJT) program seeks to ensure that Michigan employers have the highly trained technical workers they need to compete in the global economy. All Michigan-based companies are eligible to compete for the specialized training funds, which are channeled through community colleges, intermediate school districts, licensed proprietary schools, and trade academies. The fund is the link between local training providers, employers, economic development organizations, local Michigan Works! agencies, MDCD, and MEDC. Monies can be used to create jobs or upgrade skills for existing workers. Grants are awarded through an annual competition each November. Contact MEDC at (888) 522-0103 or Berrien County Community Development at (269) 983-7111, ext. 8617 for more information.

Michigan Technical Education Center

Michigan has recently established Michigan Technical Education Centers (M-TEC's), one of which is located at Lake Michigan College. These centers are focused on delivering training programs in high-wage, high-skill, high-demand occupations to increase the numbers of skilled employees in these fields. These centers are designed to promote the highest standard of partnership between business, industry and education skill-based, open-entry, individualized and self-paced training for students and businesses. For more information, contact MEDC at (888) 522-0103 or the Lake Michigan College M-TEC at (269) 926-6832.

Michigan Virtual University

Michigan Virtual University is the nation's first technical school without walls, bringing the campus to the workplace. It delivers high-quality, convenient, and cost-effective education and training to Michigan's current and future workforce. A skilled and up-to-date workforce can help Michigan:

- Preserve existing jobs and draw new companies and jobs to Michigan.
- Boost the ability of global competitiveness of Michigan companies.

MVU is a flexible, market-driven organization that contracts for the delivery of its programs and services through Michigan's public universities, community colleges, private colleges, and private sector training providers. For more information, visit MVU at www.mivu.org, or call (517) 336-7733.

Youth-Registered Apprenticeship Tax Credit

A Single Business Tax credit of up to \$2,000 per year is available to employers who train registered apprentices under age 20 who are enrolled in a high school or GED program. This credit covers up to 50% of wage-related costs of the apprentice, including salary and other payroll expenses, and up to 100% of course-related costs.

Under a formal agreement with the U.S. Department of Labor's Bureau of Apprenticeship and Training:

- Students are employed part-time with structured on-the-job training, combined with classroom work.
- Wages are paid on a graduated scale leading to journeyman status
- Continued employment with the firm is expected.

For more information, contact MEDC at (888) 522-0103.

Chambers Of Commerce

Berrien Springs / Eau Claire Area
P.O. Box 177
Berrien Springs MI 49103
Phone: (269) 471-2484
www.bsechamber.org

Coloma/Watervliet Area
P.O. Box 418
Coloma MI 49038
Phone: (269) 468-9160
www.coloma-watervliet.org

Harbor Country
530 South Whittaker Street, Suite F
New Buffalo MI 49117
Phone: (269) 469-5409
www.harborcountry.org

Bridgman Area
P.O. Box 871
Bridgman MI 49106
Phone: (269) 465-4413
www.bridgmanarea.org

Cornerstone Chamber
P.O. Box 428
Benton Harbor MI 49023
Phone: (269) 925-6100
www.cornerstonechamber.com

Lakeshore Chamber
P.O. Box 93
Stevensville MI 49127
Phone: (269) 429-1170
www.lakeshorechamber.org

Buchanan Area
103 W. Front Street
Buchanan MI 49107
Phone: (269) 695-3291
www.buchanan.mi.us

Four Flags Area
P.O. Box 10
Niles MI 49120
Phone: (269) 683-3721
www.nilesmi.com

St. Joseph Today
120 State Street
St. Joseph MI 49085
Phone: (269) 985-1111
www.sjtoday.org

Commercial & Industrial Sites

Available sites can be viewed at www.berriencounty.org.

For further information, contact:

Berrien County Community Development Department
Jennifer Arent, Economic Development Technician
Administration Center, 4th Floor
701 Main Street
St. Joseph MI 49085
Phone: (269) 983-7111, Ext. 8788
Fax: (269) 982-8611

North Berrien Community Development
Chana Kriebes, Community Development Coordinator
P.O. Box 1028
Coloma, MI 49038
Phone: (269) 468-4430
Fax: (269) 468-7088

Southwestern Michigan Economic Growth Alliance (SMEGA)
Shelley Klug, Executive Director
1950 Industrial Drive
Niles MI 49120
Phone: (269) 683-1833
Fax: (269) 683-7515

Economic Development Associations

Michigan Association of Counties

935 N. Washington Avenue
Lansing, Michigan 48906
Phone: (800) 258-1152 or (517) 372-5374
Fax: (517) 482-4599

The Michigan Association of Counties recognizes the need for a strong economic development climate at the state and local levels. We are aware of the strategic importance the agricultural industry has to the State of Michigan, and the vital need to protect our natural resources such as our forests and water. Sound land use policies relate intricately to the above issues. To enhance our business climate, we believe that the state and local governments must work with companies to help them attain high public health standards and safety performances to increase and to encourage economic development and retention.

Michigan Economic Developers Association

John Avery, Executive Director
PO Box 15096
Lansing, MI 48901-5096
Phone: (517) 241-0011
Fax: (517) 241-0089
E-mail: avery.john@medaweb.org

The Michigan Economic Developers Association was founded in 1960 to advance economic development throughout Michigan, and increase the individual member's effectiveness in the economic development profession by providing a variety of services and programs.

Michigan Municipal League

1675 Green Road
Ann Arbor, MI 48106
George D. Goodman, Executive Director
Phone: (734) 669-6303
E-mail: ggoodman@mml.org

The Michigan Municipal League, organized in 1899, is the Michigan association of cities and villages that provides a variety of services to its member municipalities and their officials.

Southwest Michigan Planning Commission

John Egelhaaf, Executive Director
185 E. Main Street, Suite 801
Benton Harbor, MI 49022
Phone: (269) 925-1137
Website: www.swmpc.org

The Southwest Michigan Planning Commission (SWMPC) serves Berrien, Cass and Van Buren Counties and is one of 14 regional planning and development organizations in the State of Michigan.

Michigan Manufacturing Technology Center - West (MMTC)

Michelle Cleveland, Vice President
The Right Place Program
111 Pearl Street
Grand Rapids, MI 49503
Phone: (616) 771-0325
Fax: (616) 771-0329

As the Michigan Manufacturing Technology Center West regional office, The Right Place Program of Grand Rapids links area manufacturers to a network of technical resources. By working in partnership with other economic development organizations, it helps to deliver these services to a 17-county region.

- **Performance Benchmarking**

To help small or mid-sized manufacturers get started, The Right Place Program offers free performance benchmarking. This service provides customized reports that can form the basis for comparison with manufacturers from the same industry, and lays the foundation for a learning plan designed to improve a company's skills and performance.

- **Inter-firm Learning**

Manufacturers fulfill their learning plans through either inter-firm learning programs or customized solutions. When firms learn from each other and an industry championed facilitator, each gains the experienced assistance they need to turn improvement goals into reality.

- **Types of inter-firm learning and customized assistance programs include:**

- Tours of best practice
- Industry conferences
- Workshops
- User groups
- Industry councils
- Benchmark studies
- Customized manufacturing assessment and consulting

Economic Development Organizations

Berrien County Community Development Department

Daniel Fette, Director
Administration Center, 4th Floor
701 Main Street
St. Joseph MI 49085
Phone: (269) 983-7111, Ext. 8617
Fax: (269) 982-8611

The Berrien County Community Development Department oversees Economic Development, Planning, Waste Management, Transportation and Resource Recovery. The Department works closely with community leaders and governments to coordinate their activities that deal with attracting and maintaining businesses within Berrien County through pooling resources. It is also the focal point for many projects that are multi-governmental. The Berrien County Community Development Department is the resource that the community looks to for the coordination of programs that are grant or loan eligible.

Cornerstone Alliance

Wendy Dant-Chesser, Executive President
38 West Wall Street; P.O. Box 428
Benton Harbor, MI 49023
Phone: (269) 925-6100
Fax: (269) 925-4471

Cornerstone Alliance is a non-profit, investor-driven economic development organization focusing on tax and job base creation, with an emphasis on socially and economically distressed areas. Its vision is to "create individual opportunity in a world-class community through partnerships."

North Berrien Community Development

Chana Kniebes, Community Development Coordinator
P.O. Box 1028
Coloma MI 49038
Phone: (269) 468-4430

North Berrien Community Development is a non-profit community-based corporation that represents the townships and cities of Coloma and Watervliet in their efforts to influence the development and changes within the Paw-Paw Lake area. They also provide services as requested to Bainbridge and Hagar Townships. The Paw-Paw Lake area is located in northern Berrien County on I-94.

Southwestern Michigan Economic Growth Alliance (SMEGA)

Shelley Klug, Executive Director
1950 Industrial Drive
Niles MI 49120
Phone: (269) 683-1833
Fax: (269) 683-7515

Whether you're looking for a fully serviced expansion site to build a new facility, or you're seeking to move your regional manufacturing or distribution division into an existing facility, SMEGA is here to help you with all your business needs.

Financial Institutions – Banks

(Main Offices listed. Several branches available throughout Berrien County.)

Bank of America
3125 Cleveland Avenue
St. Joseph MI 49085
Phone: (269) 983-7368

Fifth Third Bank
830 Pleasant Street
St. Joseph MI 49085
Phone: (269) 982-7521

Huntington Bank
929 S. 11th Street
Niles, MI 49120
Phone: (269) 683-2444

Chase Bank
400 Riverview Drive
Benton Harbor MI 49022
Phone: (269) 926-4775

1st Source Bank
1600 Hilltop Road
St. Joseph MI 49085
Phone: (269) 983-3721

National City Bank
250 Maiden Lane
St. Joseph, MI 49085
Phone: (269) 408-2025

Chemical Bank
823 Riverview Drive
Benton Harbor MI 49022
Phone: (800) 943-7386

Flagstar Banking Center
2829 Niles Avenue
St. Joseph MI 49085
Phone: (269) 983-6687

New Buffalo Savings Bank
45 N. Whittaker Street
New Buffalo, MI 49117
Phone: (269) 469-2222

Edgewater Bank
321 Main Street
St. Joseph MI 49085
Phone: (269) 982-4175

Horizon Bank
811 Ship Street
St. Joseph MI 49085
Phone: (269) 982-3200

Niles Community Bank
407 E. Main Street
Niles, MI 49120
Phone: (269) 684-9460

Financial Institutions – Credit Unions

(Main Offices listed. Several branches available throughout Berrien County.)

Country Heritage Credit Union
16580 Bakertown Rd
Buchanan MI 49107
Phone: (269) 695-2334

Honor Credit Union
2920 Lakeview Avenue
St Joseph MI 49085
Phone: (269) 983-6357

United Federal Credit Union
2807 S. State Street
St. Joseph, MI 49085
Phone: (269) 982-1400

Four Flags Area Credit Union
1443 South Third Street
Niles MI 49120
Phone: (269) 684-6512

Niles Community Federal CU
507 East Main Street
Niles MI 49120
Phone: (269) 684-0028

Tourism

Southwest Michigan Business & Tourism Directory
P.O. Box 465
St. Joseph, MI 49085
Phone: (800) 479-8697
Website: www.swmiDirectory.org

Pure Michigan Travel
300 North Washington Square
Lansing, MI 48913
Phone: (800) 644-2489
Website: www.michigan.org

Southwestern Michigan Tourist Council
2300 Pipestone Road
Benton Harbor, MI 49022
Phone: (269) 925-6301
Website: www.swmichigan.org

West Michigan Tourist Association
741 Kenmoor Avenue, Suite E
Grand Rapids, MI 49546
Phone: (800) 442-2084
Website: www.wmta.org

St. Joseph Today
120 State Street
St. Joseph, MI 49085
Phone: (269) 985-1111
Website: www.stjoetoday.org

COMMUNITY RESOURCES

Child Care

Child Care Resources (CCR), a private, non-profit organization, provides Berrien County residents with information about child care options in their communities. For more information, please contact Child Care Resources at (269) 925-5575 or toll free at (800) 343-3470. Their offices are located at 401 Eighth Street, Benton Harbor, MI 49022.

Churches

African Methodist Episcopal	1	Church of God	11	Methodist	26
Apostolic.....	9	Church of God in Christ	17	Missionary	1
Assembly of God	5	Congregational	6	Non-Denominational.....	21
Baptist.....	61	Latter Day Saints	2	Pentecostal.....	7
Bible.....	6	Episcopal	4	Presbyterian	4
Brethren	1	Evangelical.....	4	Reformed	1
Catholic	11	First Church of the Nazarene	2	Seventh Day Adventist.....	17
Charismatic.....	4	Full Gospel	2	United Church of Christ.....	12
Christian	5	Jehovah's Witness.....	6	United Pentecostal	2
Church of Christ	10	Lutheran	30		

Employment Agencies

Advance Employment Services
4407 W. Lansing
St. Joseph, MI 49085
Phone: (800) 772-4125

Beacon Services, Inc.
805 Myrtle Avenue
St. Joseph, MI 49085
Phone: (269) 983-1330
www.beaconweb.com

Beacon Services, Inc.
28 East Main Street
Niles, MI 49120
Phone: (269) 687-8888

Express Employment Professionals
3260 Niles Road
St. Joseph, MI 49085
Phone: (269) 408-1980
www.expresspros.com

Green Light Solutions
8860 Hamilton Drive
Benton Harbor, MI 49022
Phone: (269) 944-2066

JR Walters Resources
1305 Rocky Gap Road
Benton Harbor, MI 49022
Phone: (269) 925-3940
www.jrwalters.com

Kelly Services
2080 Niles Road, Suite 300
St. Joseph, MI 49085
Phone: (269) 983-0081
www.kellyservices.com

Manpower
1000 Main Street
St. Joseph, MI 49085
Phone: (269) 983-1155
www.manpower.com

Michigan Works!
499 West Main Street
Benton Harbor, MI 49022
Phone: (269) 927-1799
www.michiganworks.org

Michigan Works! Employment
& Resource
400 E. Front Street, Suite B
Buchanan, MI 49107
Phone: (269) 697-8736
www.michiganworks.org

Onstaff USA
606 Ship Street
St. Joseph, MI 49085
Phone: (269) 982-6102

Optimetech
811 Ship Street
St. Joseph, MI 49085
Phone: (269) 985-9700
www.optimetech.com

PeopleLink Staffing
308 Main Street
St. Joseph, MI 49085
Phone: (269) 985-0661
www.peoplelinkstaffing.com

Scope Services
2095 Niles Road
St. Joseph, MI 49085
Phone: (269) 983-1554

Trillium Staffing
1011 Broadway St, Ste #2
Niles, MI 49120
Phone: (269) 684-6141
www.trilliumstaffing.com

Williamson Employment Services
213 Hilltop Road
St. Joseph, MI 49085
Phone: (269) 983-0142
www.willamsonemployment.com

Williamson Employment Services
1980 South 11th Street
Niles, MI 49120
Phone: (269) 684-1454
www.willamsonemployment.com

Wood Companies
2350 Pipestone Road
Benton Harbor, MI 49022
Phone: (269) 925-6767
www.woodstaffing.com

Strive
185 East Main Street
Benton Harbor, MI 49022
Phone: (269) 925-1155

Thomas & Associates
16319 Lakeshore Road
Union Pier, MI 49129
Phone: (269) 469-5760

Employment Services – Non-Profit

Area Agency on Aging, Region IV
Adult Employment & Training
2900 Lakeview Avenue
St. Joseph, MI 49085
Phone: (800) 442-2803
Website: www.region-iv.org

Volunteer Center of Southwest Michigan
605 Pleasant Street
St. Joseph, MI 49085
Phone: (269) 983-0912
Website: www.volunteerswmi.org

American Association of Retired Persons
Senior Community Service
Employment Program
P.O. Box 866
960 Agard Avenue
Benton Harbor, MI 49023
Phone: (269) 925-3838
Toll Free: (800) 850-1142
Website: www.aarp.org

Employment Training Services

Employment & Training Services
505 Pleasant Street
St. Joseph, MI 49085
Phone: (269) 982-7240

Michigan Works! Employment & Resource
400 E. Front Street, Suite B
Buchanan, MI 49107
Phone: (269) 697-8736
www.michiganworks.org

Michigan Works! Employment & Resource
499 West Main Street
Benton Harbor, MI 49022
Phone: (269) 927-1799
www.michiganworks.org

Workforce Skills Development Center
300 Riverview Drive
Benton Harbor, MI 49022
Phone: (269) 926-7000

Employment Transportation Services

Mr. G's Express
Holly Lancaster
499 West Main Street
Benton Harbor, MI 49022
Phone: (269) 927-4535

*This service is available 24 hours a day and is provided by third party payees

Employment Websites

www.CareerMind.org
www.gatewayvvo.com
www.JobsMichiana.com
www.SouthwestMichiganJobs.com
Access the Michigan Talent Bank website by visiting www.michiganworks.org

HEALTH PROVIDERS – HOSPITALS

The following hospitals form the Lakeland Regional Health System:

Lakeland Regional Medical Center
1234 Napier Avenue
St. Joseph, MI 49085
Phone: (269) 983-8300
Number of Beds: 254

Lakeland Specialty Hospital Berrien Center
6418 Deans Hill Road
Berrien Center, MI 49102
Phone: (269) 471-7761
Number of Beds: 210

Lakeland Community Hospital Niles
31 North St. Joseph Avenue
Niles, MI 49120
Phone: (269) 683-5510
Number of Beds: 89

Lakeland Center for Outpatient Services
3900 Hollywood Road
St. Joseph, MI 49085
Phone: (269) 556-2800

Lakeland Community Hospital Watervliet
400 Medical Park
Watervliet, MI 49098
Phone: (269) 463-3111
Number of Beds: 56

Lakeland Continuing Care Center
3425 Lakeshore Drive
St. Joseph, MI 49085
Phone: (269) 983-6501
Number of Beds: 112

Libraries

Benton Harbor Public Library
213 East Wall Street
Benton Harbor, MI 49022
Phone: (269) 926-6139

Eau Claire District Library
6528 East Main Street
Eau Claire, MI 49111
Phone: (269) 461-6241

Niles Community Library
620 East Main Street
Niles, MI 49120
Phone: (269) 683-8545

Berrien Springs Community Library
215 West Union Street
Berrien Springs, MI 49103
Phone: (269) 471-7074

Galien Township Library
302 N. Cleveland Ave
Galien, MI 49113
Phone: (269) 545-8281

Maud Preston Memorial
Library
500 Market Street
St. Joseph, MI 49085
Phone: (269) 983-7167

City of Bridgman Library
4460 Lake Street
Bridgman, MI 49106
Phone: (269) 465-3663

Howard Branch Library
2341 Yankee Street
Niles, MI 49120
Phone: (269) 684-1680

Three Oaks Public Library
3 North Elm Street
Three Oaks, MI 49128
Phone: (269) 756-5621

Buchanan District Library
128 East Front Street
Buchanan, MI 49107
Phone: (269) 695-3681

Lincoln Township Public Library
2099 West John Beers Road
Stevensville, MI 49127
Phone: (269) 429-9575

Coloma Public Library
151 West Center Street
Coloma, MI 49038
Phone: (269) 468-3431

New Buffalo Public Library
33 North Thompson Street
New Buffalo, MI 49117
Phone: (269) 469-2933

Newspapers

Benton Spirit Newspaper
(Weekly)
P.O. Box 465
Benton Harbor, MI 49022
Phone: (269) 926-4241

Journal Era
(Weekly)
P.O. Box 98
Berrien Springs, MI 49103
Phone: (269) 473-5421

South Bend Tribune
(Daily)
314 E. Main Street
Niles, MI 49120
Phone: (269) 684-6802

Berrien County Record
(Weekly)
P.O. Box 191
Buchanan, MI 49107
Phone: (269) 695-3878

Michigan Citizen Newspaper
(Weekly)
P.O. Box 216
Benton Harbor, MI 49022
Phone: (269) 927-1527

South County Gazette
(Weekly)
110 N. Elm Street
Three Oaks, MI 49128
Phone: (269) 756-2421

Harbor Country News
(Weekly)
112 N. Whittaker Street
New Buffalo, MI 49117
Phone: (269) 469-1410

New Buffalo Times
(Weekly)
5 N. Eagle
New Buffalo, MI 49117
Phone: (269) 469-1100

Tri-City Record
(Weekly)
P.O. Box 7
Watervliet, MI 49098
Phone: (269) 463-6397

Herald-Palladium
(Daily)
P.O. Box 128
St. Joseph, MI 49085
Phone: (269) 429-2400

Niles Daily Star
(Daily)
217 N. Fourth Street
Niles, MI 49120
Phone: (269) 683-2100

Radio Stations

WAUS..... 90.7 FM
WCNF..... 94.4 FM
WCSY..... 98.3 FM
WFRN.....104.7 FM

WFRN1270 AM
WGMY940 AM
WGTO910 AM
WHFB 99.9 FM

WHFB1060 AM
WIRX..... 107.1 FM
WRHC..... 106.7 FM
WSJM 1400 AM

WSMK99.1 FM
WUTZ97.5 FM
WYTZ.....97.5 FM
WZBL..... 103.7 FM

Retail Areas

Benton Charter Township has major shopping facilities that include the Orchards Mall with J.C. Penney and Carson as anchor stores. Other areas include Target Plaza (Old Navy, TJ Maxx, Dunham's Sports, Pier One, Kohl's Department Store, Office Depot, Michael's Craft Store, Pet Smart) and several major stand-alone retailers such as Wal-Mart, Meijer, Lowe's Home Improvement, Home Depot and Gordon's Food Service.

New Buffalo and the surrounding **Harbor Country** communities of **Harbert, Lakeside, Sawyer, Three Oaks** and **Union Pier** offer great places to shop for antiques. From roadside stands and estate sales to antique malls, Harbor Country has long been an antique shopper's destination of choice.

Beautiful downtown **St. Joseph** offers art galleries, antiques and museum stores alongside clothing and gift stores. Sidewalk cafés are plentiful, along with one-of-a-kind restaurants – some with a view of Lake Michigan.

Coloma and **Watervliet** invite you to experience quaint antique shops, fresh farm markets and beautiful wineries. Experience nationally renowned, one-of-a-kind handmade truffles and so much more at The Chocolate Garden.

Berrien Springs is home to Apple Valley Market - Michigan's largest natural food store offering the widest variety of vegetarian foods, vitamins and natural foods. With over 600 bulk items, fresh produce, a bakery, and a deli serving homemade vegetarian entrees everyday, Apple Valley Market offers a convenient shopping experience.

In **Niles**, walk the streets of the historic downtown area while shopping for treasures in one of the many antique shops, specialty stores or picturesque downtown stores.

The smaller **communities throughout Berrien County** offer unique shopping opportunities, from eclectic to nautical and fancy to fun. New shopping experiences await you at every turn.

Senior Citizens Centers

Area Agency on Aging, Region IV
2900 Lakeview Avenue
St Joseph, Michigan 49085
Phone: (269) 983-0177 Fax: (269) 983-2483

Benton Harbor / Benton Township Senior Center
225 Colfax Avenue
Benton Harbor, Michigan 49022
Phone: (269) 927-2497 Fax: (269) 927-4055

Buchanan Senior Services
131 S. Oak Street
Buchanan, Michigan 49107
Phone: (269) 695-7119 Fax: (269) 695-7282

Central County Center for Senior Citizens Inc.
4083 E. Shawnee Road
Berrien Springs, Michigan 49103
Phone: (269) 471-2017 Fax: (269) 471-4147

Niles / Buchanan Senior Center
16 South Third Street
Niles, Michigan 49120
Phone: (269) 683-9380 Fax: (269) 683-5359

North Berrien Senior Center, Inc.
6648 Ryno Road, P.O. Box 730
Coloma, Michigan 49038
Phone: (269) 468-5682 Fax: (269) 468-9534

River Valley Senior Center
13321 Red Arrow Highway
Sawyer, Michigan 49125
Phone: (269) 469-4556 Fax: (269) 469-3486

St Joseph / Lincoln Township Senior Center
3271 Lincoln Avenue
St Joseph, Michigan 49085
Phone: (269) 429-7768 Fax: (269) 429-7764

Senior Citizens Center Niles
1109 Bell Road
Niles, Michigan 49120
Phone: (269) 683-9380 Fax: (269) 683-5359

Senior Nutrition Services, Region IV
1708 Colfax Avenue
Benton Harbor, Michigan 49022
Phone: (269) 925-0137 Fax: (269) 925-0557

RESIDENTIAL OPTIONS

Real Estate

Southwestern Michigan Realtor's Association
3123 Lake Shore Drive
St. Joseph, MI 49085
Phone: (269) 983-6375
Fax: (269) 983-5206
Website: www.swmar.org

View available homes at www.swmric.com.

New Homes

Southwestern Michigan Home Builders Association
Valerie Krause - Executive Officer
107 W. Ferry Street
Berrien Springs, MI 49103
Phone: (269) 473-5035
Fax: (269) 473-3643
E-mail: swmhba@att.net
Web: www.swmhba.com

Apartments

Baroda

Hickory Creek Apartments 269-422-2745

Benton Harbor

AAR Rental & Investment 269-927-3168
Adkins Village Housing 269-927-2562
Benton Harbor Hope VI 269-934-0163
Benton Manor Cooperative 269-925-8761
Berrien Homes 269-927-3548
Blossom Acres 269-927-3541
Briarwood Apartments 269-927-1055
Brunson Hill Homes 269-925-9600
COGIC Village Apartments 269-926-4000

Berrien Springs

E & H Rentals 269-473-5622
Main Street Apartments 269-473-3020

Bridgman

Bridgman Estates 269-465-5956
Monogram Apartments 269-465-6146
Sunset Dunes 269-465-3333

Buchanan

Buchanan Place 269-695-7047
Mill Pond Senior Apartments 269-695-0475

Coloma

Aries Investment Corp. 269-849-1213

New Buffalo

Oakview Estates Apartments 269-469-2150

Niles

Arbor Trails 269-683-1850
Berrien Woods Apartments 269-684-7779
Briar Crest Townhouses 1 & 2 269-684-2461
Four Flags Plaza 269-684-2246
Griffin Estates 269-687-1000
Guest Rest Apartments 269-684-2608
Harbor Towne Apartments 269-684-1831

Country View 269-926-6653
Dick Lane Apartments 269-925-1770
E Rayford Senior Apartments 269-926-2363
Harbor Pointe Apartments II 269-926-2899
M & C Home & Apartment 269-925-8897
River Terrace Apartments 269-926-1149
The Village at Fairplain 269-926-2144

Moore Enterprises 269-429-3017
Park Manor Apartments 269-473-7275

Sunset Estates 269-465-3333
Sunset Landing Apartments 269-465-3333

Parkside Terrace Apartments 269-695-7543
West Wind Apartments 269-695-2555

Hagar Crest Apartments 269-849-0931

Kling Apartments 269-683-4680
North Niles Villa 269-684-5590
Parkview Apartments 269-683-8407
Pawating Village 269-684-4500
River Oak Apartments 269-687-8340
Rynewson Village 269-695-5381
Southview Apartments 269-684-5438

Spansail Court Apartments	269-683-1423	Village West Apartment	269-683-6040
Tanglewood Apartments	269-684-4500		
St. Joseph			
Lake Pines Apartments	269-429-2282	Lutheran Heritage Village	269-556-0542
Lakecrest Ravine	269-983-6666	The Shores	269-429-2289
Lakecrest Shoreline	269-983-4444	The Vineyards Apartments	269-429-7522
Lakeshore Condominiums	269-429-4481	Westview Apartments	269-983-7728
Stevensville			
Chalet on the Lake	269-429-5285	Fountainview Village	269-429-3918
Chalet on the Lake Coop	269-465-6365		
Three Oaks			
Oak Tree Apartments	269-756-7334		
Watervliet			
Park Lane Village	269-463-3065	Tri City Village	269-463-4543

EDUCATION

Public Schools

Berrien Regional Education Service
Agency (formerly the ISD)
711 St. Joseph Avenue
Berrien Springs, MI 49103
Phone: (269) 471-7725

Benton Harbor Area Schools
823 Riverview Drive
Benton Harbor MI 49022
Phone: (269) 927-0600
Enrollment: 3,688

Berrien Springs Public Schools
One Sylvester Avenue
Berrien Springs MI 49103
Phone: (269) 471-2891
Enrollment: 1,981

Brandywine Community Schools
1830 S. Third Street
Niles MI 49120
Phone: (269) 684-7150
Enrollment: 1,450

Bridgman Public Schools
9964 Gast Road
Bridgman MI 49106
Phone: (269) 466-0271
Enrollment: 986

Buchanan Community Schools
401 W. Chicago Street
Buchanan MI 49107
Phone: (269) 695-8401
Enrollment: 1,677

Coloma Community Schools
2518 Boyer Road
Coloma MI 49038
Phone: (269) 468-2424
Enrollment: 1,838

Eau Claire Public Schools
6190 W. Main Street
Eau Claire MI 49111
Phone: (269) 461-6947
Enrollment: 812

Galien Township Schools
122 E. Southeastern Avenue
Galien MI 49113
Phone: (269) 545-3364
Enrollment: 185

Lakeshore Public Schools
5771 Cleveland Avenue
Stevensville MI 49127
Phone: (269) 428-1400
Enrollment: 2,890

New Buffalo Area Schools
1112 East Clay Street
New Buffalo, MI 49117
Phone: (269) 469-6010
Enrollment: 654

Niles Community Schools
111 Spruce Street
Niles MI 49120
Phone: (269) 683-0732
Enrollment: 3,835

River Valley School District
15480 Three Oaks Road
Three Oaks MI 49128
Phone: (269) 756-9541
Enrollment: 721

St. Joseph Public Schools
2214 S. State Street
St. Joseph MI 49085
Phone: (269) 982-4621
Enrollment: 2,860

Watervliet Public Schools
450 E. Red Arrow Highway
Watervliet MI 49098
Phone: (269) 463-5566
Enrollment: 1,280

Catholic Schools

Lake Michigan Catholic
Elementary (K-5)
3165 Washington Avenue
St. Joseph, MI 49085
Phone: (269) 429-0227
Enrollment: 282

Lake Michigan Catholic Jr/Sr
High School (6-12)
915 Pleasant Street
St. Joseph, MI 49085
Phone: (269) 983-2511
Enrollment: 280

St. Joseph Catholic School (Pre-6)
188 Lucinda Lane
Watervliet, MI 49098
Phone: (269) 463-3941
Enrollment: 75

St. Mary's School (Pre-6)
217 South Lincoln Avenue
Niles, MI 49120
Phone: (269) 683-9191
Enrollment: 100

St. Mary of the Lake School
(Pre-8)
704 W Merchant Street
New Buffalo, MI 49117
Phone: (269) 469-1515
Enrollment: 150

Lutheran Schools

Christ Lutheran (Pre-8)
4333 Cleveland
Stevensville, MI 49127
Phone: (269) 429-7111
Enrollment: 138

Grace Lutheran (Pre-8)
404 East Glenlord Road
St. Joseph, MI 49085
Phone: (269) 429-4951
Enrollment: 158

Immanuel Lutheran (Pre-5)
9650 N. Church Street
Bridgman, MI 49106
Phone: (269) 465-3351
Enrollment: 65

Michigan Lutheran High (9-12)
615 E. Marquette Woods Road
St. Joseph, MI 49085
Phone: (269) 429-7861
Enrollment: 130

St. Paul's Lutheran (Pre-8)
2673 W. John Beers Road
Stevensville, MI 49127
Phone: (269) 429-1546
Enrollment: 112

Trinity Lutheran (Pre-8)
613 Court Street
St. Joseph, MI 49085
Phone: (269) 983-3056
Enrollment: 240

Salem Lutheran Preschool
275 Marvin Street, P O Box 729
Coloma, MI 49038
Phone: (269) 468-6567
Enrollment: 32

Trinity Lutheran (Pre-8)
9123 George Avenue
Berrien Springs, MI 49103
Phone: (269) 473-1811
Enrollment: 70

Trinity Lutheran (Pre-8)
5791 Sawyer Road
Sawyer, MI 49125
Phone: (269) 426-3151
Enrollment: 39

Other Denominational Schools

Bethel Christian Academy (2-12)
945 Chippewa
Buchanan, MI 49107
Phone: (269) 695-3356
Enrollment: 32

Grace Christian School (K-12)
325 North M-140 Highway
Watervliet, MI 49098
Phone: (269) 463-5545
Enrollment: 190

Private (Non-Parochial) Schools

Brookview School
501 Zollar Drive
Benton Harbor, MI 49022
Phone: (269) 925-3544
Enrollment: 200

Public School Academies

Benton Harbor Charter School
455 Riverview Drive, Suite 1
Benton Harbor, MI 49022
Phone: (269) 925-3807
Enrollment: 450

Dream Academy
248 Ninth Street
Benton Harbor, MI 49022
Phone: (269) 925-1587
Enrollment: 147

Countryside Charter School
4800 Meadowbrook Road
Benton Harbor, MI 49022
Phone: (269) 944-3319
Enrollment: 500

Mildred C. Wells Academy (K-6)
281 South Fair
Benton Harbor, MI 49022
Phone: (269) 926-2885
Enrollment: 220

Seventh-Day Adventist Schools

Andrews Academy (9-12)
8833 Garland Avenue
Berrien Springs, MI 49104
Phone: (269) 471-3138
Enrollment: 250

Niles SDA Elementary (K-8)
110 N. Fairview
Niles, MI 49120
Phone: (269) 683-5444
Enrollment: 55

Village SDA Elementary (K-8)
409 W. Mars Street
Berrien Springs, MI 49103
Phone: (269) 473-5121
Enrollment: 186

Eau Claire SDA School (1-8)
6562 Naomi Rd.
Eau Claire, MI 49111
Phone: (269) 944-4132
Enrollment: 27

Ruth Murdock Elementary (K-8)
200 Garland Avenue
Berrien Springs, MI 49104
Phone: (269) 471-3225
Enrollment: 250

Universities & Higher Learning Institutions

Andrews University
North U.S. 31
Berrien Springs, MI 49104
Phone: (269) 471-7771

Lake Michigan College
2755 E. Napier Avenue
Benton Harbor, MI 49022
Phone: (269) 927-3571

Lake Michigan College
at Bertrand Crossing
1905 Foundation Drive
Niles, MI 49120
Phone. (269) 695-1391

Lake Michigan College M-TEC Center
400 Klock Road
Benton Harbor, MI 49022
Phone: (269) 926-6832

Siena Heights College
2755 E. Napier Avenue
Benton Harbor, MI 49022
Phone: (269) 927-6711

Southwestern Michigan College
M-TEC Center
2229 East U.S.-12
Niles, MI 49120
Phone: (269) 687-5640

Southwestern Michigan College
Niles Area Campus
2229 East U.S.-12
Niles, MI 49120
Phone: (269) 687-1600

Western Michigan University
Southwest Campus
2785 E. Napier Avenue
Benton Harbor, MI 49022
Phone: (269) 934-1500

LEISURE ACTIVITIES

The following list of leisure activities is not an all-inclusive listing. For further information, please contact our local chambers listed on page 26 and tourism organizations on page 30.

Antiques

AAA Straight Up Auction
2725 E. Geyer Road
Niles, MI 49120
Phone: (269) 695-7701

Dunes Antique Center
12825 Red Arrow Highway
Sawyer, MI 49125
Phone: (269) 426-4043

Ipsa Facto
1 Ash Street West
Three Oaks, MI 49128
Phone: (269) 756-3404

Annette's Antiques
340 N. Main Street
Watervliet, MI 49098
Phone: (269) 463-8002

Elephant's Breath Antiques
203 State Street
St. Joseph, MI 49085
Phone: (269) 982-5210

Lakeside Antiques
14866 Red Arrow Highway
New Buffalo, MI 49117
Phone: (269) 469-4467

Anvil Antiques
3439 Hollywood Road
St. Joseph, MI 49085
Phone: (269) 429-5132

Eye of the Beholder
283 N. Paw Paw Street
Coloma, MI 49038
Phone: (269) 468-7626

Main Street Antique Mall
109 E. Main Street
Niles, MI 49120
Phone: (269) 684-9393

Apparel From the Past
638 E. Shawnee Road
Baroda, MI 49101
Phone: (269) 422-1871

Four Flags Antique Mall
218 N. 2nd Street
Niles, MI 49120
Phone: (269) 683-6681

Marco Polo
13630 Red Arrow Highway
New Buffalo, MI 49117
Phone: (269) 469-6272

Barn The-Antiques
510 E. Buffalo Street
New Buffalo, MI 49117
Phone: (269) 469-0333

Frog Forest Findings
9350 Union Pier Road
Union Pier, MI 49129
Phone: (269) 469-7050

Mattson's House of Décor
6472 Paw Paw Avenue
Coloma, MI 49038
Phone: (269) 468-7953

Bernal, Peter
318 E. Buffalo Street
New Buffalo, MI 49117
Phone: (269) 469-3107

Front
207 E Front St
Buchanan, MI 49107
Phone: (269) 695-0230

Michiana Antique Mall
2423 S. 11th Street
Niles, MI 49120
Phone: (269) 684-7001

Black Pearl Antiques
17648 U.S. Highway 12
New Buffalo, MI 49117
Phone: (269) 469-1109

Girdles for Turtles Now Antiques
45 S. Whittaker Street
New Buffalo, MI 49117
Phone: (269) 469-3232

Miller's Collectibles
719 Gard Avenue
St. Joseph, MI 49085
Phone: (269) 983-2900

Burkeshire House of Antiques
126 N Church St
Coloma, MI 49038
Phone: (269) 468-6659

Great Lakes Antique Mall
210 Ryno Road
Coloma, MI 49038
Phone: (269) 468-3208

More & More Antiques
6659 U.S. Highway 31
Berrien Springs, MI 49103
Phone: (269) 428-9084

Days of Yore Antiques
215 State Street
St. Joseph, MI 49085
Phone: (269) 983-4144

Harbert Antique Mall
13887 Red Arrow Highway
Harbert, MI 49115
Phone: (269) 469-0977

Oak Hill Antiques
6520 Brush Lake Road
Eau Claire, MI 49111
Phone: (269) 782-9292

(The) Doll Shop
203 E Main St
Niles, MI 49120
Phone: (269) 684-1004

Homeless Treasures
9012 First Street
Baroda, MI 49101
Phone: (269) 422-6110

Picker's Paradise Antique Mall
2809 S. 11th Street
Niles, MI 49120
Phone: (269) 683-6644

Plum Tree
16337 Red Arrow Highway
Union Pier, MI 49129
Phone: (269) 469-5980

Rideout Antiques
4369 Lake Street
Bridgman, MI 49106
Phone: (269) 465-6855

Sammy's Village Antiques
117 Cleveland Avenue
Galien, MI 49113
Phone: (269) 545-0101

Shawnee Road Antiques
638 E. Shawnee Road
Baroda, MI 49101
Phone: (269) 422-1382

Skip's Antique Shop
16710 Red Arrow Highway
New Buffalo, MI 49117
Phone: (269) 469-3330

Springdale
19 S. Elm Street
Three Oaks, MI 49128
Phone: (269) 756-9896

State Street Antiques
410 State Street
St. Joseph, MI 49085
Phone: (269) 983-7422

Stewart James Antiques
12619 Red Arrow Highway
Sawyer, MI 49125
Phone: (269) 426-3133

Timeless Treasures Antiques
12908 Red Arrow Hwy
Sawyer, MI 49125
Phone: (269) 426-3636

Virgo Antique Shop
4106 River Road
Sodus, MI 49126
Phone: (269) 927-3880

Wild Goose Chase Antiques
315 State Street
St. Joseph, MI 49085
Phone: (269) 982-4119

Zollar, Charles O
3076 E. Napier Avenue
Benton Harbor, MI 49022
Phone: (269) 925-8422

Beaches

Glenlord Beach
3000 West Glenlord Road
Stevensville, MI 49127
Open All Year
8:00 am to Nightfall

Hagar Park Beach
5440 M-63 North
Coloma, MI 49038
Open All Year
8:00 am to 10:00 pm

Jean Klock Park
Jean Klock Road
Benton Harbor, MI 49022
Memorial thru Labor Day
8:00 am to 10:00 pm

Lincoln Township Beach
5450 Notre Dame Avenue
Stevensville, MI 49127
May through October
8:00 am to 11:00 pm

Lions Park
1701 Lions Park Drive
St. Joseph, MI 49085
Open All Year
8:00 am to 10:00 pm

New Buffalo City Beach
North end of Whittaker Street
New Buffalo, MI 49117
May through October
8:00 am to 10:00 pm

Silver Beach
101 Broad Street
St. Joseph, MI 49085
April through October
6:00 am to 10:00 pm

Tiscornia Beach
80 Ridgeway Street
St. Joseph, MI 49085
Open All Year
6:00 am to 10:00 pm

Weko Beach
5239 Lake Street
Bridgman, MI 49106
May through October
6:30 am to 11:00 pm

Billiards

Billiard Garden
1286 South 11th Street
Niles, MI 49120
Phone: (269) 684-0502

Campus Q
888 Valley Drive
Benton Harbor, MI 49022
Phone: (269) 934-7665

Boat Launches

Benton Harbor Access Site
Riverview Drive
Benton Harbor, MI 49022
Access: St. Joseph River

Black Lake Access Site
Black Lake Road
Sodus, MI 49126
Access: Black Lake

Buchanan Access Site
East River Road
Buchanan, MI 49107
Access: St. Joseph River

Galien Access Site
Red Arrow Highway
Galien, MI 49113
Access: Galien River

Paw Paw Lake East
North Watervliet Road
Watervliet, MI 49098
Access: Paw Paw Lake

Shamrock Park
Old U.S. 31
Berrien Springs, MI 49103
Access: St. Joseph River

Jasper Dairy Access Site
Jasper Dairy Road
Berrien Springs, MI 49103
Access: St. Joseph River

Paw Paw Lake West
Island Court
Coloma, MI 49038
Access: Paw Paw Lake

St. Joseph City Boat Launch
Anchors Court
St. Joseph, MI 49085
Access: Lake Michigan

New Buffalo City Boat Launch
Marquette Road
New Buffalo, MI 49117
Access: Galien River & Lake Michigan

Pipestone Creek
Southeast of Benton Harbor
Benton Harbor, MI 49022
Access: Pipestone Creek

Weko Beach
5237 Lake Street
Bridgman, MI 49106
Access: Lake Michigan

River Park
Zollar Drive
Benton Harbor, MI 49022
Access: St. Joseph River

Bowling

Blossom Lanes
2305 South M-139
Benton Harbor, MI 49022
Phone: (269) 927-3174

Joey Armadillo's
2732 South 11th Street
Niles, MI 49120
Phone: (269) 687-5555

Lakeshore Lanes
6201 Red Arrow Highway
Stevensville, MI 49127
Phone: (269) 429-5421

Coloma Lanes
6025 Mountain Road
Coloma, MI 49038
Phone: (269) 468-7127

Kelley's Bowl
2705 Cleveland Avenue
St. Joseph, MI 49085
Phone: (269) 983-3034

Timber Lanes
517 North Second Street
Niles, MI 49120
Phone: (269) 983-6122

Calendar of Special Annual Events⁶

January

Hunter Ice Festival, Downtown Niles
Watervliet Winter Festival, Downtown Watervliet
Wedding World Expo, Mendel Center, Benton Harbor

February

Harbert Goes Hollywood, Harbert House Bed & Breakfast
Magical Ice Carving Festival, Downtown St. Joseph
Second Season Ball, New Buffalo

March

Southwest Michigan Home, Garden & Leisure Show, Mendel Center, Benton Harbor
Spring 4-H Show, Orchards Mall, Benton Harbor
St. Patrick's Day Parade & Celebration, Downtown Coloma

April

Art Attack, Throughout Harbor Country
Berrien County Arts & Science Expo, Orchards Mall, Benton Harbor
Easter Egg Hunt, Lake Bluff Park, Downtown St. Joseph
International Food Fair, Andrews University, Berrien Springs
Passion Play, Andrews University, Berrien Springs

6 Descriptions and further information on local annual events are available at www.swmichigan.org, www.harborcountry.org, www.swmiDirectory.org and at the individual Chambers of Commerce or community websites.

May

3rd Saturday Gallery Walk, Three Oaks
Art Attack, Throughout Harbor Country
Blossomtime Festival, Downtown St. Joseph
Cruise-In & Car Show, Lane Automotive, Watervliet
European Farmers Market, Skip's Other Place Restaurant, New Buffalo
Festival of the Blooms, Fernwood Botanical Gardens, Niles
Lemon Creek Winery Art & Wine Fair, Berrien Springs
Lest We Forget Memorial Program, St. Joseph City & Benton Harbor City
Memorial Day Parades, Several Cities, Townships & Villages
St. Mary of the Lake, New Buffalo
St. Joseph River Run, Niles

June

3rd Saturday Gallery Walk, Three Oaks
Antiques on the Bluff, Downtown St. Joseph
Berrien Springs Antique Tractor & Car Show, Berrien County Youth Fairgrounds, Berrien Springs
Berrien Towne & Country Quilt Show, Mendel Center, Benton Harbor
Bluegrass Festival, Riverfront Park, Niles
European Farmers Market, Skip's Other Place Restaurant, New Buffalo
Flag Day Celebration, Legion Post Park, Three Oaks
Fly-In and Pancake Breakfast, Niles Regional Airport
Gene Harris Coming Home, Coming Together Concert, Downtown Benton Harbor
Fathers Day Festival, Lemon Creek Winery, Berrien Springs
Lake Michigan Shore Wine Festival, Weko Beach, Bridgman
Rhumblin Regatta & Craft Fair, Downtown St. Joseph

July

Blues Bash, Lemon Creek Winery, Berrien Springs
Blues Fest, Watkins Park, Three Oaks
Chalk the Block, Downtown St. Joseph
Eau Claire Area Cherry Festival, Eau Claire Area
European Farmers Market, Skip's Other Place Restaurant, New Buffalo
Fourth of July Celebration, Downtown Watervliet
Fireworks Display, Downtown Baroda
Fireworks Display, New Buffalo City Beach
Fireworks Display, Silver Beach, St. Joseph
Four A's Car Show, Three Oaks
Greek Festival, Hellenic Center, New Buffalo
International Cherry Pit Spitting Championship, Tree-Mendus Fruit Farm, Eau Claire
Krasl Art Fair, Downtown St. Joseph on the Bluff
Lakeside Association Annual Arts & Crafts Show, Lakeside Park
Ozzie's Eatery Corvette Show, New Buffalo
Reds, Whites, and BBQ Festival, Round Barn Winery, Baroda
River Valley Antique Power Annual Show, Three Oaks
Shady Grove Fiddle Fest, Berrien Springs
Venetian Festival, Downtown St. Joseph / Silver Beach
Whirlpool Steelhead Triathlon, Jean Klock Park, Benton Harbor

August

Antiques on the Bluff, Downtown St. Joseph
AMA ATV National Motocross, Red Bud Track N Trail, Buchanan
Berrien Classic Horse Show, Berrien County Youth Fairgrounds, Berrien Springs
Berrien County Youth Fair, Berrien County Youth Fairgrounds, Berrien Springs
Chalk the Block, Downtown St. Joseph
European Farmers Market, Skip's Other Place Restaurant, New Buffalo
Glad-Peach Festival, Downtown Coloma
Great Lakes Surf Luau, New Buffalo City Beach
Krasl Concours on the Bluff, Downtown St. Joseph

Outsider's Outside Folk Art Fair, Harbert
NasChair Challenge, Downtown St. Joseph
Riverfest, The Riverfront in Downtown Niles
Harvest Party, Round Barn Winery, Baroda
Ship & Shore Art & Music Festival, Downtown New Buffalo
Sounds of Silent Film Festival, Dewey Cannon Park, Three Oaks

September

3rd Saturday Gallery Walk, Three Oaks
Antiques on the Bluff, Downtown St. Joseph
Apple Cider Century Bicycle Tour, Three Oaks
Barodafest, Downtown Baroda
Blues, Brews & BBQ, Downtown St. Joseph
European Farmers Market, Skip's Other Place Restaurant, New Buffalo
Fall Festival, Lake Charter Township Park, Bridgman
Four Flags Area Apple Festival, Niles Apple Fairgrounds
Harvest Fest, Lemon Creek Winery, Berrien Springs
Niles Haunted House Scream Park, Niles
Outsiders Outside Art Fair, Downtown Harbert
Salute to Veterans Fly-In Breakfast, Niles Regional Airport
Tri-State Regatta, Downtown St. Joseph

October

3rd Saturday Gallery Walk, Three Oaks
Antiques on the Bluff, Downtown St. Joseph
Arts & Crafts Show, New Buffalo High School
Chapel Hill Arts & Crafts Show, Berrien County Youth Fairgrounds, Berrien Springs
Chili Hop Fly-In, Watervliet Regional Airport
European Farmers Market, Skip's Other Place Restaurant, New Buffalo
Fernwood Autumn Air Fall Festival, Fernwood Botanical Gardens, Niles
Harbor Country Chili Cook-Off, Skip's Other Place, New Buffalo
Harvest Days, Throughout Harbor Country
Harvest Festival, Downtown St. Joseph
Harvest & Wine Fest, New Buffalo
Haunted House, New Buffalo
New Buffalo Harvest & Wine Festival, Downtown New Buffalo
Niles Haunted House Scream Park, Niles
Oktoberfest, Three Oaks
Tractor Show & Swap Meet, Three Oaks
WOW Art Gallery Hot Rod Happening, New Buffalo

November

3rd Saturday Gallery Walk, Three Oaks
Holiday Market, Fernwood Botanical Gardens, Niles
HollyMarket & SoupsOn, Krasl Art Center, St. Joseph
Luminary Festival, Downtown St. Joseph

December

3rd Saturday Gallery Walk, Three Oaks
Holiday Open House, North Berrien Historical Society, Coloma
Kindle Your Christmas Spirit, Downtown Berrien Springs
Reindog Parade, Downtown St. Joseph

Camping

Bear Cave Resort
4085 Bear Cave Road
Buchanan, MI 49107
Phone: (269) 695-3050

Camp Ronora
9325 Dwight Boyer Road
Watervliet, MI 49098
Phone: (269) 463-6315

Dune Lake Campground
80855 County Road 376
Coloma, MI 49038
Phone: (269) 764-8941

Fuller's Resort & Campground
1622 E. Clear Lake Road
Buchanan, MI 49107
Phone: (269) 695-3785

House of David
M-139 & Empire Avenue
Benton Harbor, MI 49022
Phone: (269) 927-3302

Judy's Motel & Campground
18891 U.S. Highway 12
New Buffalo, MI 49117
Phone: (269) 469-0222

Kamp Across from the Dunes
12011 Red Arrow Highway
Sawyer, MI 49125
Phone: (269) 426-4971

KOA Campgrounds
3527 Coloma Road
Riverside, MI 49084
Phone: (269) 849-3333

Oronoko Lakes
1788 Snow Road
Berrien Springs, MI 49103
Phone: (269) 471-7389

Paw Paw River Campground
5355 M-140
Watervliet, MI 49098
Phone: (269) 463-5454

Riverfront Park Campgrounds
1701 Pucker Street
Niles, MI 49120
Phone: (269) 687-9681

Shamrock Park Campgrounds
9385 Old US 31 Highway
Berrien Springs, MI 49103
Phone: (269) 473-5691

Spaulding Lake Campground
2305 Bell Road
Niles, MI 49120
Phone: (269) 684-1393

Tower Hill Camp & Retreat Center
12173 Tower Hill Road
Sawyer, MI 49125
Phone: (269) 426-3881

Warren Dunes State Park
12032 Red Arrow Highway
Sawyer, MI 49125
Phone: (269) 426-4013

Weko Beach & Campground
5239 Lake Street
Bridgman, MI 49106
Phone: (269) 465-3406

Family Activities

Booming Acres Emu Farm
1768 W. Wagner Road
Buchanan, MI 49107
Phone: (269) 422-2312

Captain Mike's Fun Park
10975 S. Red Arrow Highway
Bridgman, MI 49106
Phone: (269) 465-5747

Curious Kids Museum
415 Lake Boulevard
St. Joseph, MI 49085
Phone: (269) 983-2543

Deer Forest
6800 Indian Lane
Coloma, MI 49038
Phone: (269) 468-4961

Galaxy Roller Rink
1120 Ontario Road
Niles, MI 49120
Phone: (269) 684-8197

Hidden Pointe Fun Park
1062 Nickerson Avenue
Benton Harbor, MI 49022
Phone: (269) 926-1358

Howard Ice Arena
2414 Willa Drive
St. Joseph, MI 49085
Phone: (269) 983-8795

Jollay Orchards
1850 Friday Road
Coloma, MI 49038
Phone: (269) 468-3075

Lakeshore Roller World
5567 Red Arrow Highway
Stevensville, MI 49127
Phone: (269) 429-7700

Niles Haunted House
855 Mayflower Road
Buchanan, MI 49107
Phone: (269) 697-0382

Red Bud Track N Trail
13688 N. Red Bud Trail
Buchanan, MI 49107
Phone: (269) 695-5906

Scooter Joe's Scooter Rental
213 State Street
St. Joseph, MI 49085
Phone: (269) 408-8133

Shemmy's (Ice Cream & Mini Golf)
7563 Pokagon Road
Berrien Center, MI 49102
Phone: (269) 461-6404

Slacker's Family Fun & Laser Tag
1800 Pipestone Road
Benton Harbor, MI 49022
Phone: (269) 325-7525

Surfari Joe's Indoor Waterpark
8528 Arnt Boulevard
Watervliet, MI 49098
Phone: (269) 463-7946

YMCA Family Center
3665 Hollywood Road
St. Joseph, MI 49085
Phone: (269) 428-9622

YMCA Family Center
905 N. Front Street
Niles, MI 49120
Phone: (269) 683-1552

Farm Markets & U-Picks

Benton Harbor Fruit Market
1891 Territorial Road
Benton Harbor, MI 49022
Phone: (269) 925-4040

Bob's Barn Farm Market & Bakery
4858 Coloma Road
Coloma, MI 49038
Phone: (269) 849-2247

Corncrib Creations
443 Nickerson Avenue
Benton Harbor, MI 49022
Phone: (269) 926-4252

D & S Apple House
2140 West Street
Niles, MI 49120
Phone: (269) 684-5318

Darrel Gast Farm
11013 Landon Road
Baroda, MI 49101
Phone: (269) 422-2284

Falak's Produce
Cleveland Ave. & Marrs Road
Baroda, MI 49101
Phone: (269) 422-1402

Fruit Acres Farms & U-Pick
3452 Friday Road
Coloma, MI 49038
Phone: (269) 468-3668

Grandpa's Cider Mill
2941 Friday Road
Coloma, MI 49038
Phone: (269) 468-3700

Hercik Farms
244 W. Lemon Creek Road
Baroda, MI 49101
Phone: (269) 422-1413

Higbee's Farm
162 S. Blue Creek Road
Benton Harbor, MI 49022
Phone: (269) 926-8014

Hillside Orchards
8198 Fleisher Lane
Berrien Springs, MI 49103
Phone: (269) 471-7558

Hollywood Farms
7386 Hollywood Road
Baroda, MI 49101
Phone: (269) 422-1229

Jackson's Fruit Market
2 E. Buffalo Street
New Buffalo, MI 49117
Phone: (269) 469-4029

Jackson's Fruit Stand
12120 Red Arrow Highway
Sawyer, MI 49125
Phone: (269) 426-6168

Johanson Apple World
8700 Keehn Road
Baroda, MI 49101
Phone: (269) 422-2426

Jollay Orchards
1850 Friday Road
Coloma, MI 49038
Phone: (269) 468-3075

Jones Blueberries
9245 Gast Road
Bridgman, MI 49106
Phone: (269) 465-4745

Keller Fruit & Produce
9343 Church Street
Bridgman, MI 49106
Phone: (269) 465-3968

Krieger's Blueberries
11426 Gast Road
Bridgman, MI 49106
Phone: (269) 426-4653

Kugle Farm
8678 Cleveland Avenue
Baorda, MI 49101
Phone: (269) 422-1880

Lee's
S. Red Bud Trail
Buchanan, MI 49107
Phone: (269) 313-0389

L.H. Piggot & Girls Farm Market
3824 East Napier Avenue
Benton Harbor, MI 49022
Phone: (269) 876-9269

Lehman's Orchard
2280 Portage Road
Niles, MI 49120
Phone: (269) 683-9078

Lemon Creek Fruit Farm
533 East Lemon Creek Road
Berrien Springs, MI 49103
Phone: (269) 471-1321

Neal Nitz Farms
7939 Stevensville-Baroda Road
Baroda, MI 49101
Phone: (269) 422-1246

Nye's Apple Barn
3151 Niles Road
St. Joseph, MI 49085
Phone: (269) 429-5056

Paul's Michigan Fruit Market
910 West Buffalo Street
New Buffalo, MI 49117
Phone: (269) 469-0601

Pinecrest Tree Farm
4403 Spring Creek Road
Galien, MI 49113
Phone: (269) 545-8125

Poplar Lawn Farms
2169 Snow Road
Baroda, MI 49101
Phone: (269) 422-1859

Priebe's Apples
569 W. Shawnee Road
Baroda, MI 49101
Phone: (269) 422-1221

Pumpkins Galore
3256 East Napier Avenue
Benton Harbor, MI 49022
Phone: (269) 463-5215

Rambo's Blueberries
11306 South Gast Road
Bridgman, MI 49106
Phone: (269) 426-4074

Schutze's Pumpkins
11470 Hills Road
Buchanan, MI 49107
Phone: (269) 369-4268

Shafer Orchards
207 Shafer Road
Baroda, MI 49101
Phone: (269) 422-1972

Shelton Farms & Market
1832 S. 11th St. (US33 & Bell Rd)
Niles, MI 49120
Phone: (269) 684-3230

Silverstone Farms
9224 Black Lake Road
Eau Claire, MI 49111
Phone: (269) 424-3105

Skibbe Family Farm Market
6413 M63 North
Coloma, MI 49038
Phone: (269) 849-0157

Stan & Steve's Farmstand
8025 Territorial Road
Watervliet, MI 49098
Phone: (269) 463-4379

Stovers U-Pik & Farm Market
7608 US-31
Berrien Springs, MI 49103
Phone: (269) 471-1401

Sturdy Pumpkins
6147 River Road
Sodus, MI 49126
Phone: (269) 926-6815

The Blueberry Patch
I-94 @ Exit 12, 1 Mile West
Sawyer, MI 49125
Phone: (269) 426-4521

Tree-Mendus Cider House
9185 Union Pier Road
Union Pier, MI 49129
Phone: (269) 469-6885

Tree-Mendus Fruit Farm
9351 East Eureka Road
Eau Claire, MI 49111
Phone: (269) 782-7101

Tree-Mendus Fruit Stand
9185 Union Pier Road
Union Pier, MI 49129
Phone: (269) 863-3276

Wetzel Farms
1228 W. Shawnee Road
Baroda, MI 49101
Phone: (269) 422-2302

Yule-Tide Acres Nursery
8466 M-62
Berrien Center, MI 49102
Phone: (269) 461-3111

Galleries & Art Centers

B.J. Goetz Art Studio
1101 Broad Street
St. Joseph, MI 49085
Phone: (269) 983-2680

Blue Gallery
16 S. Elm Street
Three Oaks, MI 49128
Phone: (269) 756-9338

Box Factory for the Arts
1101 Broad Street
St. Joseph, MI 49085
Phone: (269) 983-3688

Brick School Gallery & Gifts
177 South Paw Paw Street
Coloma, MI 49038
Phone: (269) 468-9351

Buchanan Art Center
117 W. Front Street
Buchanan, MI 49107
Phone: (269) 697-4005

Burnison Galleries
15460 Red Arrow Highway
Union Pier, MI 49129
Phone: (269) 469-1141

Chartreuse Studio & Gallery
517 Pleasant Street
St. Joseph, MI 49085
Phone: (269) 983-0931

Clipper Ship Gallery
116 North Whittaker Street
New Buffalo, MI 49117
Phone: (269) 469-2590

Courtyard Gallery
813 East Buffalo Street
New Buffalo, MI 49117
Phone: (269) 469-4110

Cowley Fine Art Gallery
105B N. Whittaker Street
New Buffalo, MI 49117
Phone: (269) 469-2039

Dancing Loon Artisans
30 N. Whittaker
New Buffalo, MI 49117
Phone: (269) 586-2580

Expressions Art
185 E. Main Street
Benton Harbor, MI 49022
Phone: (269) 926-2083

Fenway Gallery
307 W. Buffalo Street
New Buffalo, MI 49117
Phone: (269) 469-2818

For Heaven's Sake Gallery
11 S. Townsend Street
New Buffalo, MI 49117
Phone: (269) 231-5251

Gallery H
15 South Elm Street
Three Oaks, MI 49128
Phone: (269) 756-7777

Gallery on the Alley
611 Broad Street
St. Joseph, MI 49085
Phone: (269) 983-6261

Jill Underhill Gallery
13462 Red Arrow Highway
New Buffalo, MI 49117
Phone: (269) 469-8000

Judith Racht
13707 Prairie Road
Three Oaks, MI 49128
Phone: (269) 469-1080

Krasl Art Center
707 Lake Boulevard
St. Joseph, MI 49085
Phone: (269) 983-0271

Lakeside Gallery
15486 Red Arrow Highway
Union Pier, MI 49129
Phone: (269) 469-3022

Local Color Gallery
16187 Red Arrow Highway
Union Pier, MI 49129
Phone: (269) 469-5332

LTD Creations
2495 Korn Street
Niles, MI 49120
Phone: (269) 684-4753

Native Frame
13661 Red Arrow Highway
Three Oaks, MI 49128
Phone: (269) 469-0878

New Moon Gallery
91 Hinkley Road
Benton Harbor, MI 49022
Phone: (269) 926-9391

Pinacotheca
4425 Lake Street
Bridgman, MI 49106
Phone: (269) 266-7036

Randall Higdon Gallery
177 South Paw Paw Street
Coloma, MI 49038
Phone: (269) 468-4079

Searless Sculpture
13464 Red Arrow Highway
Sawyer, MI 49125
Phone: (269) 469-1509

Studio B
114 N. Elm Street
Three Oaks, MI 49128
Phone: (269) 756-9954

Tabula Rasa Gallery
8918 First Street
Baroda, MI 49101
Phone: (773) 972-1786

Vesuvius
138 Water St. & 707 Pipestone Rd.
Benton Harbor, MI 49022
Phone: (269) 925-5525

Water Media
177 S. Paw Paw Street
Coloma, MI 49038
Phone: (269) 468-4079

Waterfront
606B Ship Street
St. Joseph, MI 49085
Phone: (269) 982-3470

Wow Art Gallery
529 East Buffalo Street
New Buffalo, MI 49117
Phone: (269) 469-1938

Gaming

Four Winds Casino
11111 Wilson Road
New Buffalo, MI 49117
Phone: (866) 494-6371

Golf Courses – Private

Chikaming Country Club
15029 Lakeside Road
Lakeside, MI 49116
Phone: (269) 469-5484
18 holes
Rating: 70.9 Par: 71

Dunes Club
10600 Marquette Drive
New Buffalo, MI 49117
Phone: (269) 469-5539
9 holes
Rating: 72.5 Par: 36

Lost Dunes Golf Club
9300 Red Arrow Hwy
Bridgman, MI 49106
Phone: (269) 465-9300
18 holes
Rating: 71.4 Par: 70

Orchard Hills Country Club
2841 Niles - Buchanan Rd.
Buchanan, MI 49107
Phone: (269) 695-5991
18 holes
Rating: 69.9 Par: 70

Point O' Woods
1516 Roslyn Road
Benton Harbor, MI 49022
Phone: (269) 944-1433
18 holes
Rating: 76.0 Par: 72

Signal Point Club
1475 W. River Road
Niles, MI 49120
Phone: (269) 683-7073
9 holes
Rating: 70.6 Par: 72

Golf Courses – Public

Berrien Hills Golf Club
690 W. Napier Avenue
Benton Harbor, MI 49022
Phone: (269) 925-2171
18 holes
Rating: 69.5 Par: 71

Blossom Trails Golf Club
1565 E. Britain Avenue
Benton Harbor, MI 49022
Phone: (269) 925-4951
18 holes
Rating: 68.3 Par: 70

Brookwood Golf Course
1339 Rynearson Road
Buchanan, MI 49107
Phone: (269) 695-7818
18 hole Championship Course
Rating: 71.2 Par: 72

(The) Golf Club at Harbor Shores
400 Klock Road
Benton Harbor, MI 49022
Phone: (269) 927-4653
18 Holes
Rating: 74.7 Par: 71

Meadows Family Golf Center
2121 W. Shawnee Road
Baroda, MI 49101
Phone: (269) 422-2828
9 holes
Rating: N/A Par: 29

Pipestone Creek Golf Course
6768 Naomi Road
Eau Claire, MI 49111
Phone: (269) 944-1611
18 holes
Rating: n/a Par: 67

Indian Lake Hills
55321 Brush Lake Road
Eau Claire, MI 49111
Phone: (269) 782-2540
27 holes
Rating: 68.5 Par: 72

Paw Paw Lake Golf Club
4548 Forrest Beach Road
Watervliet, MI 49098
Phone: (269) 463-3831
18 holes
Rating: 66.9 Par: 70

Plym Park
401 Marmont Street
Niles, MI 49120
Phone: (269) 684-7331
9 holes
Rating: 69.0 Par: 36

Lake Michigan Hills Golf Club
2520 Kerlikowske Road
Benton Harbor, MI 49022
Phone: (269) 849-2722
18 holes
Rating: 71.1 Par: 72

Pebblewood Country Club
9794 S. Jericho Road
Bridgman, MI 49106
Phone: (269) 465-5611
18 holes
Rating: 65.6 Par: 68

Whittaker Woods
12578 Wilson Road
New Buffalo, MI 49117
Phone: (269) 469-3400
18 holes
Rating: 74.3 Par: 72

Lodging

For specific information, contact the properties directly, or call the Southwestern Michigan Tourist Council at (269) 925-6301.

Baymont Inn & Suites
2601 W. Marquette Woods
Stevensville MI 49127
Phone: (269) 429-9111

Buffalo Motel
18373 US Highway 12
New Buffalo MI 49117
Phone: (269) 469-0846

Dellwood Inn
5575 Paw Paw Lake Road
Coloma, MI 49038
Phone: (269) 468-6111

Best Value Inn & Suites
2860 M-139 Highway
Benton Harbor MI 49022
Phone: (269) 925-3234

Candlewood Suites
2567 W. Marquette Woods
Stevensville MI 49127
Phone: (269) 428-4400

Economy Inn
2699 M-139
Benton Harbor, MI 49022
Phone: (269) 925-7021

Best Western
1598 Mall Drive
Benton Harbor MI 49022
Phone: (269) 925-1880

Chalet on the Lake
5340 Notre Dame Avenue
Stevensville, MI 49127
Phone: (269) 429-5285

Executive Inn
798 Ferguson Drive
Benton Harbor MI 49022
Phone: (269) 927-1172

Best Western Plaza Hotel
18800 LaPorte Road
New Buffalo, MI 49117
Phone: (269) 469-4193

Chestnut House
1911 Lakeshore Drive
St. Joseph, MI 49085
Phone: (269) 983-7413

Fairfield Inn
11400 Holiday Drive
New Buffalo, MI 49117
Phone: (269) 586-2222

Boulevard Inn
521 Lake Boulevard
St. Joseph MI 49085
Phone: (269) 983-6600

Comfort Suites
1825 Meadowbrook Road
Benton Harbor MI 49022
Phone: (269) 925-8800

Firefly Resort
15657 Lakeshore Road
Union Pier, MI 49129
Phone: (269) 469-0245

Bowman's Motel
2138 S. 11th Street
Niles MI 49120
Phone: (269) 683-7200

Comfort Suites
2633 W. Marquette Woods
Stevensville MI 49127
Phone: (269) 428-4888

Forler's Motel
2483 Yankee Road
Niles, MI 49120
Phone: (269) 684-4215

Bridgman Inn
9999 Red Arrow Highway
Bridgman MI 49106
Phone: (269) 465-3187

Courtyard by Marriott
1592 Mall Drive
Benton Harbor MI 49022
Phone: (269) 925-3000

Four Flags Hotel
404 E. Main Street
Niles, MI 49120
Phone: (269) 683-7771

Four Winds Casino Hotel
11111 Wilson Road
New Buffalo, MI 49117
Phone: (866) 494-6371

Holiday Inn Express
3019 Lake Shore Drive
St. Joseph MI 49085
Phone: (269) 982-0004

Pebble House
15093 Lakeshore Road
Lakeside, MI 49116
Phone: (269) 469-1416

Garden Grove Bed & Breakfast
9549 Union Pier Road
Union Pier, MI 49129
Phone: (269) 469-6346

Inn at Union Pier
9708 Berrien Street
Union Pier, MI 49129
Phone: (269) 469-1200

Pebbles of Brandywine Creek
1564 S. Third Street
Niles, MI 49120
Phone: (269) 687-8924

Golden Eagle Motel
1243 S. 11th Street
Niles MI 49120
Phone: (269) 684-1000

Judy's Motel & Campground
18891 U.S. Highway 12
New Buffalo, MI 49117
Phone: (269) 469-0222

Pennellwood Resort
10652 Range Line Road
Berrien Springs MI 49103
Phone: (269) 473-2511

Gordon Beach Inn
16220 Lake Shore Road
New Buffalo MI 49117
Phone: (269) 469-0800

Knight's Inn
1950 E. Napier Avenue
Benton Harbor MI 49022
Phone: (269) 926-1371

Pine Garth Inn
15790 Lakeshore Road
Union Pier, MI 49129
Phone: (269) 469-1642

Grand Beach Motel & Log Cabins
19189 U.S. 12
New Buffalo, MI 49117
Phone: (269) 469-1555

Lake Country Inn
18 W. Merchant Street
New Buffalo, MI 49117
Phone: (269) 469-0800

Pumpnickel Inn
16090 Red Arrow Highway
Union Pier, MI 49129
Phone: (269) 469-1200

Grand Beach Inn
19400 Ravine Drive
New Buffalo, MI 49117
Phone: (269) 469-0097

Lakeside Inn
15281 Lakeshore Road
Lakeside MI 49116
Phone: (269) 469-0600

Rabbit Run Inn
6227 Elm Drive
Sawyer, MI 49125
Phone: (269) 405-1050

Hampton Inn
5050 Red Arrow Highway
Stevensville MI 49127
Phone: (269) 429-2700

Marina Grand Resort
600 W. Water Street
New Buffalo, MI 49117
Phone: (877) 945-8600

Ramada Inn
8258 Arnt Boulevard
Watervliet, MI 49098
Phone: (269) 463-7946

Harbert House Bed & Breakfast
13827 Prairie Road
Harbert, MI 49115
Phone: (269) 231-5111

Motel 6
2063 Pipestone Road
Benton Harbor MI 49022
Phone: (269) 925-5100

Ray's Motel
4277 Red Arrow Highway
Stevensville MI 49127
Phone: (269) 429-8088

Harbor Grand Hotel
111 W. Water Street
New Buffalo MI 49117
Phone: (269) 469-7700

New Buffalo Inn & Spa
231 E. Buffalo Street
New Buffalo MI 49117
Phone: (269) 469-1000

Red Roof Inn
1630 Mall Drive
Benton Harbor, MI 49022
Phone: (269) 927-2484

Holiday Inn Express
2276 Pipestone Road
Benton Harbor MI 49022
Phone: (269) 927-4599

Niles Inn & Conference Center
930 S. 11th Street
Niles MI 49120
Phone: (269) 684-3000

River Bend Retreat
254 Jakway Avenue
Benton Harbor, MI 49022
Phone: (269) 926-2220

Holiday Inn Express
11500 Holiday Road
New Buffalo, MI 49117
Phone: (269) 469-3436

O'Brien's Inn & Resort
11539 Wilson Road
New Buffalo, MI 49117
Phone: (269) 469-4440

Riverwatch Inn
711 W. Main Street
Benton Harbor MI 49022
Phone: (269) 926-8818

Holiday Inn Express
1265 S. 11th Street
Niles MI 49120
Phone: (269) 684-3900

Paw Paw Lake Motel
4881 Wil-O-Paw Drive
Coloma, MI 49038
Phone: (269) 468-6080

Ronora Lodge & Retreat Center
9325 Dwight Boyer Road
Watervliet, MI 49098
Phone: (269) 463-6315

Sandpiper Inn
16136 Lakeview Avenue
Union Pier, MI 49129
Phone: (269) 469-1146

Sans Souci Euro Inn & Cottages
19265 S. Lakeside Road
New Buffalo, MI 49117
Phone: (269) 756-3141

Schick Lakeside Resort
5215 Paw Paw Lake Road
Coloma, MI 49038
Phone: (269) 468-4080

Silver Beach Hotel
100 Main Street
St. Joseph MI 49085
Phone: (269) 983-7341

South Cliff Inn Bed & Breakfast
1900 Lakeshore Drive
St. Joseph, MI 49085
Phone: (269) 983-4881

St. Joseph Motel
2723 Niles Avenue
St. Joseph MI 49085
Phone: (269) 982-3333

Marinas

Brian's Marina
285 Anchors Way
St. Joseph, MI 49085
Phone: (269) 983-2628

Eagle Point Harbor
2351 Niles Road
St. Joseph, MI 49085
Phone: (269) 429-7400

Harbor Isle Marina
143 Anchors Way
St. Joseph, MI 49085
Phone: (269) 982-0812

JD's Marina
330 N. M-140
Watervliet, MI 49098
Phone: (269) 463-6511

Lake Michigan Yacht Club
300 Lake Drive
New Buffalo, MI 49117
Phone: (269) 469-0761

Stephen's Motel
3113 S. 11th Street
Niles, MI 49120
Phone: (269) 683-3275

Super 8
4290 Red Arrow Highway
Stevensville MI 49127
Phone: (269) 429-3218

Super 8 of Sawyer
12850 Super Drive
Sawyer MI 49125
Phone: (269) 426-8300

Super Inn
18716 LaPorte Road
New Buffalo, MI 49117
Phone: (269) 469-3345

Sweet Cherry Resort
3313 Chestnut Avenue
Coloma, MI 49038
Phone: (269) 849-1233

Treasure House Bed & Breakfast
210 S. Elm Street
Three Oaks, MI 49128
Phone: (269) 756-2117

Michigan City Yacht Club
1 W. Washington Street
New Buffalo, MI 49117
Phone: (219) 879-3363

Moorings Associations
310 Oselka Drive
New Buffalo, MI 49117
Phone: (269) 469-5790

New Buffalo City Marina
100 W. Water Street
New Buffalo, MI 49117
Phone: (269) 469-6887

New Buffalo Yacht Club
500 Oselka Drive
New Buffalo, MI 49117
Phone: (269) 469-3970

Oselka's Marina
514 Oselka Drive
New Buffalo, MI 49117
Phone: (269) 469-2600

Village Inn Motel
9008 Old US-31 South
Berrien Springs MI 49103
Phone: (269) 471-1354

Villager Lodge
3822 Red Arrow Highway
Stevensville, MI 49127
Phone: (269) 429-3261

Warren Woods Inn
15506 Lakeshore Road
Union Pier, MI 49129
Phone: (269) 469-5880

Waverland Beach Bed & Breakfast
7022 Waverland Path
Stevensville, MI 49127
Phone: (269) 429-1170

White Rabbit Inn Bed & Breakfast
14634 Red Arrow Highway
Lakeside, MI 49116
Phone: (269) 469-4620

Paw Paw Lake Yacht Club
Yacht Club Point
Coloma, MI 49038
Phone: (269) 468-6300

Pier 1000 Marina
1000 Riverview Drive
Benton Harbor, MI 49022
Phone: (269) 927-4471

Pier 33
250 Anchors Way
St. Joseph, MI 49085
Phone: (800) 886-0493

St. Joseph River Yacht Club
1 Lighthouse Lane
St. Joseph, MI 49085
Phone: (269) 983-6393

West Basin Marine
273 Marina Drive
St. Joseph, MI 49085
Phone: (269) 983-5432

Movie Theaters

Celebration! Cinema
1468 Cinema Way
Benton Harbor, MI 49022
Phone: (269) 934-7469

Vickers Theatre
6 North Elm Street
Three Oaks, MI 49128
Phone: (269) 756-3522

Loma Theater
221 N. Paw Paw Street
Coloma, MI 49038
Phone: (269) 468-5662

Wonderland Cinema
402 N. Front Street
Niles, MI 49120
Phone: (269) 684-2222

Museums

1839 Courthouse Square
313 North Cass Street
Berrien Springs, MI 49103
Phone: (269) 471-1202

House of David Museum
2251 Riverside Road
Benton Harbor, MI 49022
Phone: (269) 849-0739

Pears 1853 Mill Museum
121 South Oak Street
Buchanan, MI 49107
Phone: (269) 695-5525

Chapin Mansion
Fifth & Main Streets
Niles, MI 49120
Phone: (269) 683-4700

Mary's City of David Museum
1158 East Britain Avenue
Benton Harbor, MI 49022
Phone: (269) 925-1601

Siegfried H. Horn Archaeological
Museum
9047 U. S. 31
Berrien Springs, MI 49104
Phone: (269) 471-3273

Ferry Street School
620 Ferry Street
Niles, MI 49120
Phone: (269) 683-2585

Morton House Museum
501 Territorial
Benton Harbor, MI 49022
Phone: (269) 930-5163

Silver Beach Carousel Museum
235 Broad Street
St. Joseph, MI 49085
Phone: (269) 985-0090

Fort St. Joseph Museum
508 East Main Street
Niles, MI 49120
Phone: (269) 683-4702

Natural History Museum
Andrews University - Price Hall
Berrien Springs, MI 49104
Phone: (269) 471-3243

Three Oaks Spokes Bicycle
1 Oak Street
Three Oaks, MI 49128
Phone: (269) 756-3361

Heritage Museum
708 Market Street
St. Joseph, MI 49085
Phone: (269) 983-1191

New Buffalo Railroad Museum
530 S. Whittaker Street
New Buffalo, MI 49117
Phone: (269) 469-5409

Wilkinson Heritage Museum
15300 Red Arrow Highway
Lakeside, MI 49116
Phone: (269) 469-2090

Horn Archaeological Museum
Andrews University
Berrien Springs, MI 49104
Phone: (269) 471-3273

North Berrien Historical Museum
300 Coloma Avenue
Coloma, MI 49038
Phone: (269) 468-3330

Nature Centers

Fernwood Botanical Gardens
13988 Range Line Road
Niles, MI 49120
Phone: (269) 683-8653

Mud Lake Bog Nature Preserve
Elm Valley Road
Buchanan, MI 49107
Phone: (269) 695-6442

Sarett Nature Center
2300 Benton Center Road
Benton Harbor, MI 49022
Phone: (269) 927-4832

Love Creek Nature Center
9228 Huckleberry Road
Berrien Springs, MI 49103
Phone: (269) 471-2617

Ronora Lodge & Retreat Center
9325 Dwight Boyer Road
Watervliet, MI 49098
Phone: (269) 463-6315

Parks – County & State

Grand Mere State Park
Thorton Road
Stevensville, MI 49127
Phone: (269) 426-4013

Island Park
West Side of St. Joseph River
Niles, MI 49120
Phone: (269) 683-4700

Lovecreek County Park
9228 Huckleberry Road
Berrien Springs, MI 49103
Phone: (269) 471-2617

Madeline Bertrand Park
3038 Adams Road
Niles, MI 49120
Phone: (269) 683-8280

Riverfront Park
East side of St. Joseph River
Niles, MI 49120
Phone: (269) 683-4700

Rocky Gap County Park
M-63 & Rocky Gap Road
Benton Harbor, MI 49022
Phone: (269) 983-7111 x8435

Warren Dunes State Park
12032 Red Arrow Highway
Sawyer, MI 49125
Phone: (269) 426-4013

Warren Woods State Park
Elm Valley Road
Three Oaks, MI 49128
Phone: (269) 426-4013

Performing Arts

Acorn Theater
107 North Elm Street
Three Oaks, MI 49128
Phone: (269) 756-3879

Buchanan Commons
122 Days Avenue
Buchanan, MI 49107
Phone: (269) 695-6409

Howard Performing Arts Center
Andrews University
Berrien Springs, MI 49104
Phone: (269) 471-3560

Mendel Center
2755 East Napier Avenue
Benton Harbor, MI 49022
Phone: (269) 927-1000

Southwest Michigan Symphony
513 Ship Street
St. Joseph, MI 49085
Phone: (269) 923-6739

St. Joseph Municipal Band
700 Broad Street
St. Joseph, MI 49085
Phone: (269) 983-5541

Tin Shop Theater
108 East Roe Street
Buchanan, MI 49107
Phone: (269) 695-6464

Twin Cities Players
600 West Glenlord Road
St. Joseph, MI 49085
Phone: (269) 429-0400

Vickers Theatre
6 North Elm Street
Three Oaks, MI 49128
Phone: (269) 756-3522

Water Activities

Big Bird Charters
143 Anchors Way
St. Joseph, MI 49085
Phone: (269) 470-4149

Captain Hooks Charters
220 Anchors Way
St. Joseph, MI 49085
Phone: (269) 983-4140

Coldwater Charters
143 Anchors Way
St. Joseph, MI 49085
Phone: (269) 449-1977

Fin Nailer Fishing Charters
602 Fishermans Road
St. Joseph, MI 49085
Phone: (269) 998-1599

Four Seasons Sport Fishing Charters
7780 Stevensville-Baroda Road
Baroda, MI 49101
Phone: (269) 422-2287

Golden Eye Charters
6367 Pokagon
Berrien Center, MI 49102
Phone: (269) 471-7162

Great White Parasailing
Located at Silver Beach
St. Joseph, MI 49085
Phone: (269) 876-4089

Guy's Marine
210 N. West Street
Coloma, MI 49038
Phone: (269) 468-3120

Headhunter Charters
10034 Painter School Road
Berrien Center, MI 49102
Phone: (269) 921-6997

Nub Lake Canoeing
1701 Pucker Street
Niles, MI 49120
Phone: (269) 687-9681

Paw Paw River Canoe
5355 M-140
Watervliet, MI 49098
Phone: (269) 463-5454

Outpost Sports
800 Lions Park Drive
St. Joseph, MI 49085
Phone: (269) 983-2010

Outpost Sports
105 West Buffalo Street
New Buffalo, MI 49117
Phone: (269) 469-4210

Rainbow Fishing Charters
9387 U.S. 31
Berrien Springs, MI 49103
Phone: (269) 471-3900

Risky Business Sportfishing
10489 Range Line Road
Berrien Springs, MI 49103
Phone: (269) 473-2523

Sea Hawk Charters
5841 Longhorn Trail
Stevensville, MI 49127
Phone: (269) 429-6110

Silver King Sportfishing Charters
285 Anchors Way
St. Joseph, MI 49085
Phone: (269) 983-7916

Sportboat Fishing Charter
2631 Hillview Lane
St. Joseph, MI 49085
Phone: (269) 428-9696

Sports Widow Fishing Charters
3855 Peach Street
Stevensville, MI 49127
Phone: (269) 930-9262

Sundowner Fishing Charters
7068 Evans Road
Eau Claire, MI 49111
Phone: (269) 461-3099

Surfari Joe's Waterpark
8528 Arnt Boulevard
Watervliet, MI 49098
Phone: (269) 463-7946

Wineries

Contessa Wine Cellars
3235 Friday Road
Coloma, MI 49038
Phone: (269) 468-5534

Domaine Berrien Cellars
398 East Lemon Creek Road
Berrien Springs, MI 49103
Phone: (269) 473-9463

Founder's Wine Cellar
8963 Hills Road
Baroda, MI 49101
Phone: (269) 426-5222

Free Run Distillery
10062 Burgoyne Road
Berrien Springs, MI 49103
Phone: (269) 471-1737

Free Run Distillery Wine Tasting
9185 Union Pier Road
Union Pier, MI 49126
Phone: (269) 469-6885

Hickory Creek Winery
750 Browntown Road
Baroda, MI 49101
Phone: (269) 422-1100

Karma Vista Vineyards
6991 Ryno Road
Coloma, MI 49038
Phone: (269) 468-9463

Lemon Creek Winery
533 Lemon Creek Road
Berrien Springs, MI 49103
Phone: (269) 471-1321

Round Barn Winery
10981 Hills Road
Baroda, MI 49101
Phone: (269) 422-1617

Round Barn Winery Tasting
9185 Union Pier Road
Union Pier, MI 49129
Phone: (269) 469-6885

St. Julian Wine Tasting Room
9100 Union Pier Road
Union Pier, MI 49129
Phone: (269) 469-3150

Tabor Hill Winery & Restaurant
185 Mount Tabor Road
Buchanan, MI 49107
Phone: (269) 422-1161

Tabor Hill Wine Cellar
10243 Red Arrow Highway
Bridgman, MI 49106
Phone: (269) 465-6566

Tabor Hill Wine Tasting Room
80 West Main Street
Benton Harbor, MI 49022
Phone: (269) 925-6402

Vino 100 / Tinder Box
225 N. Whittaker Street #101
New Buffalo, MI 49117
Phone: (269) 469-8466

White Pine Tasting Room
317 State Street
St. Joseph, MI 49085
Phone: (269) 281-0098

Wine Sellers
16409-B Red Arrow Highway
Union Pier, MI 49129
Phone: (269) 469-7566

Wyncroft LLC
716 East Front Street
Buchanan, MI 49107
Phone: (269) 695-8000

This Community Profile of
BERRIEN COUNTY

Has Been Prepared By:

Berrien County Community Development Department
Berrien County Administration Center
Jennifer Arent, Economic Development Technician
701 Main Street
St. Joseph, MI 49085
Phone: (269) 983-7111 Ext. 8788
Fax: (269) 982-8611

Every effort has been made to ensure the accuracy of this information. However, as data is constantly changing, Berrien County will be held harmless for any omissions or errors contained herein.

Special Acknowledgments of Our Thanks To:

The Berrien County Planning Commission for the 2009 Master Plan

The G.I.S./Land Description Department for the Berrien County Maps

The Fort St. Joseph Museum

The Southwest Michigan Business & Tourism Directory

The Southwestern Michigan Tourist Council

The Harbor Country Chamber of Commerce

The Cornerstone Chamber of Commerce

St. Joseph Today

May 2011