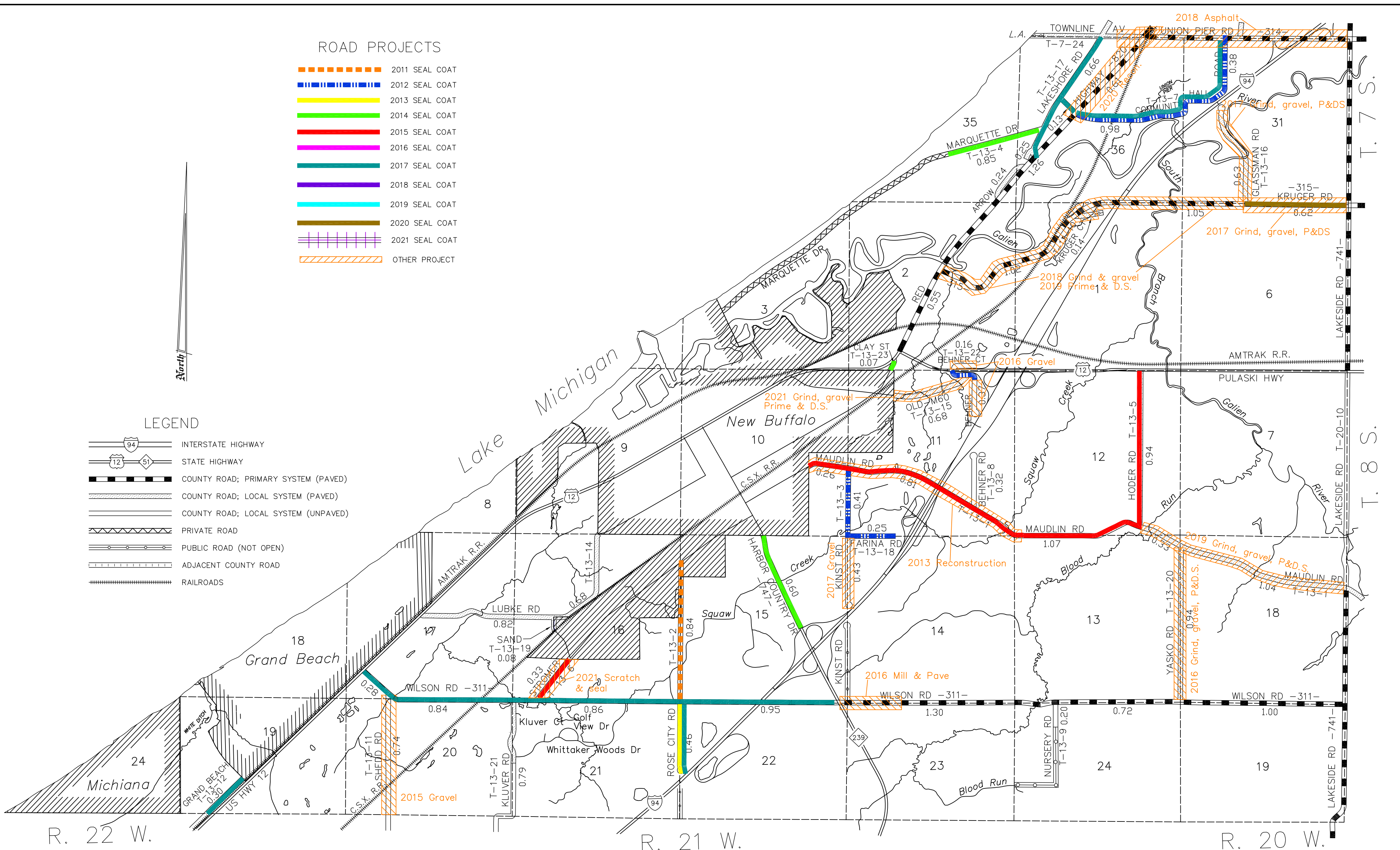


ROAD PROJECTS

- ▬▬▬▬▬▬ 2011 SEAL COAT
- ▬▬▬▬▬▬ 2012 SEAL COAT
- ▬▬▬▬▬▬ 2013 SEAL COAT
- ▬▬▬▬▬▬ 2014 SEAL COAT
- ▬▬▬▬▬▬ 2015 SEAL COAT
- ▬▬▬▬▬▬ 2016 SEAL COAT
- ▬▬▬▬▬▬ 2017 SEAL COAT
- ▬▬▬▬▬▬ 2018 SEAL COAT
- ▬▬▬▬▬▬ 2019 SEAL COAT
- ▬▬▬▬▬▬ 2020 SEAL COAT
- ▬▬▬▬▬▬ 2021 SEAL COAT
- ▬▬▬▬▬▬ OTHER PROJECT

LEGEND

- INTERSTATE HIGHWAY
- STATE HIGHWAY
- COUNTY ROAD; PRIMARY SYSTEM (PAVED)
- COUNTY ROAD; LOCAL SYSTEM (PAVED)
- COUNTY ROAD; LOCAL SYSTEM (UNPAVED)
- PRIVATE ROAD
- PUBLIC ROAD (NOT OPEN)
- ADJACENT COUNTY ROAD
- RAILROADS



NEW BUFFALO TWP.

BERRIEN COUNTY  
ROAD DEPARTMENT

BENTON HARBOR, MICHIGAN

KEVIN STACK, COUNTY HWY ENGINEER

SCALE: 1"=2000' DATE: October, 2021

No. 13

PRIMARY ROAD SYSTEM IS 11.66 MILES  
LOCAL ROAD SYSTEM IS 17.58 MILES